

CANTERBURY SOUTH PUBLIC SCHOOL

20 HIGH ST, CANTERBURY NSW 2193

DEVELOPMENT APPLICATION

| ARCHITECTURAL DRAWING LIST - DA | |
|---------------------------------|--|
| SHEET NUMBER | SHEET NAME |
| DA0-C00 | COVER SHEET / LOCATION PLAN |
| DA1-C01 | SITE ANALYSIS PLAN |
| DA1-C02 | SITE DEMOLITION PLAN |
| DA1-C03 | SITE PLAN |
| DA2-C04 | BLOCK C - GROUND FLOOR PLAN |
| DA2-C05 | BLOCK C - LEVEL 1 FLOOR PLAN |
| DA2-C06 | BLOCK C - LEVEL 2 FLOOR PLAN |
| DA2-C07 | BLOCK C - ROOF PLAN |
| DA3-C08 | BLOCK C - ELEVATIONS |
| DA3-C09 | BLOCK C - ELEVATIONS |
| DA4-C10 | BLOCK C - SECTIONS |
| DA5-C11 | PHOTOMONTAGE - VIEW FROM NAPIER STREET |
| DA5-C12 | ARTIST IMPRESSION - VIEW FROM TOWN SQUARE |
| DA6-C13 | COVERED WALKWAY |
| DA8-C14 | SHADOW DIAGRAMS - PLAN SHEET 1 |
| DA8-C15 | SHADOW DIAGRAMS - PLAN SHEET 2 |
| DA8-C16 | FSR CALCULATION |
| DA8-C17 | NAPIER STREET PARKING |
| DA9-C18 | BLOCK C - EXTERNAL FINISHES SCHEDULE SHEET 1 |
| DA9-C19 | BLOCK C - EXTERNAL FINISHES SCHEDULE SHEET 2 |
| DA9-C20 | SAMPLE BOARD |
| DA9-C21 | SIGNAGE PLAN |
| DA9-C22 | WASTE AREA PLAN AND NEW PARKING PLAN |
| DA9-C23 | HIGH STREET ELEVATION AND SIGNAGE |



ARTIST IMPRESSION



LOCATION PLAN N.T.S.





SITE ANALYSIS

1 : 1000

DEVELOPMENT
APPLICATION

Drawing Title
SITE ANALYSIS PLAN

Project
Canterbury South Public School

at
20 High St, Canterbury NSW 2193
for
Department of Education

Architect
NBRSARCHITECTURE.
Sydney
61 2 9922 2344
Any form of replication of this drawing in full or in part without the written permission of NBRS+PARTNERS Pty Ltd constitutes an infringement of the copyright.
Nominated Architects: Geoffrey Deane 3786; Andrew Duffin 5602; Garry Hoddnett 5286
ABN 16 002 247 565
nbsarchitecture.com

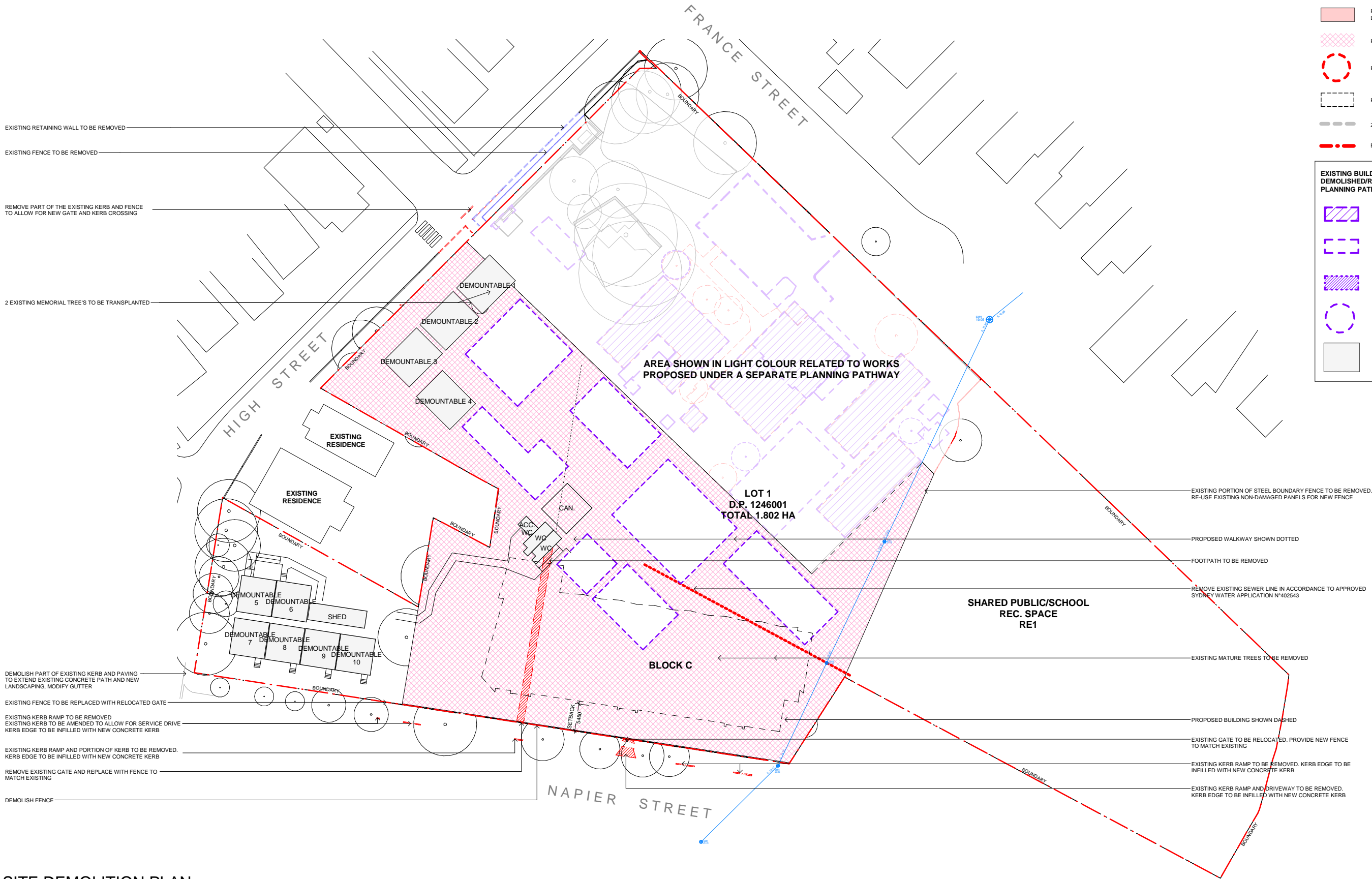
Date
Scale 1000@A1 or 2000@A3
Drawing Reference
17343-NBRS-A-DA1-C01
Revision

DEMOLITION LEGEND

- EXISTING CONCRETE PATHS TO BE DEMOLISHED
- EXISTING LANDSCAPE TO BE REMOVED
- EXISTING TREES TO BE REMOVED
- PROPOSED BUILDING AND PATHWAY
- ZONING LINE
- BOUNDARY LINE

EXISTING BUILDINGS AND TREES ON SITE TO BE DEMOLISHED/RELOCATED UNDER SEPARATE PLANNING PATHWAY:

- EXISTING BUILDINGS TO BE DEMOLISHED
- EXISTING STRUCTURES TO BE DEMOLISHED
- EXISTING BUILDINGS TO BE RELOCATED
- EXISTING TREES TO BE REMOVED
- DEMOUNTABLES TO BE REMOVED



SITE DEMOLITION PLAN

1 : 400

| Issue | No. | Date | Description | Chkd |
|-------|-----|------|-------------|------|
| | | | | |

DEVELOPMENT APPLICATION

Drawing Title
SITE DEMOLITION PLAN

Project
Canterbury South Public School

at
20 High St, Canterbury NSW 2193
for
Department of Education

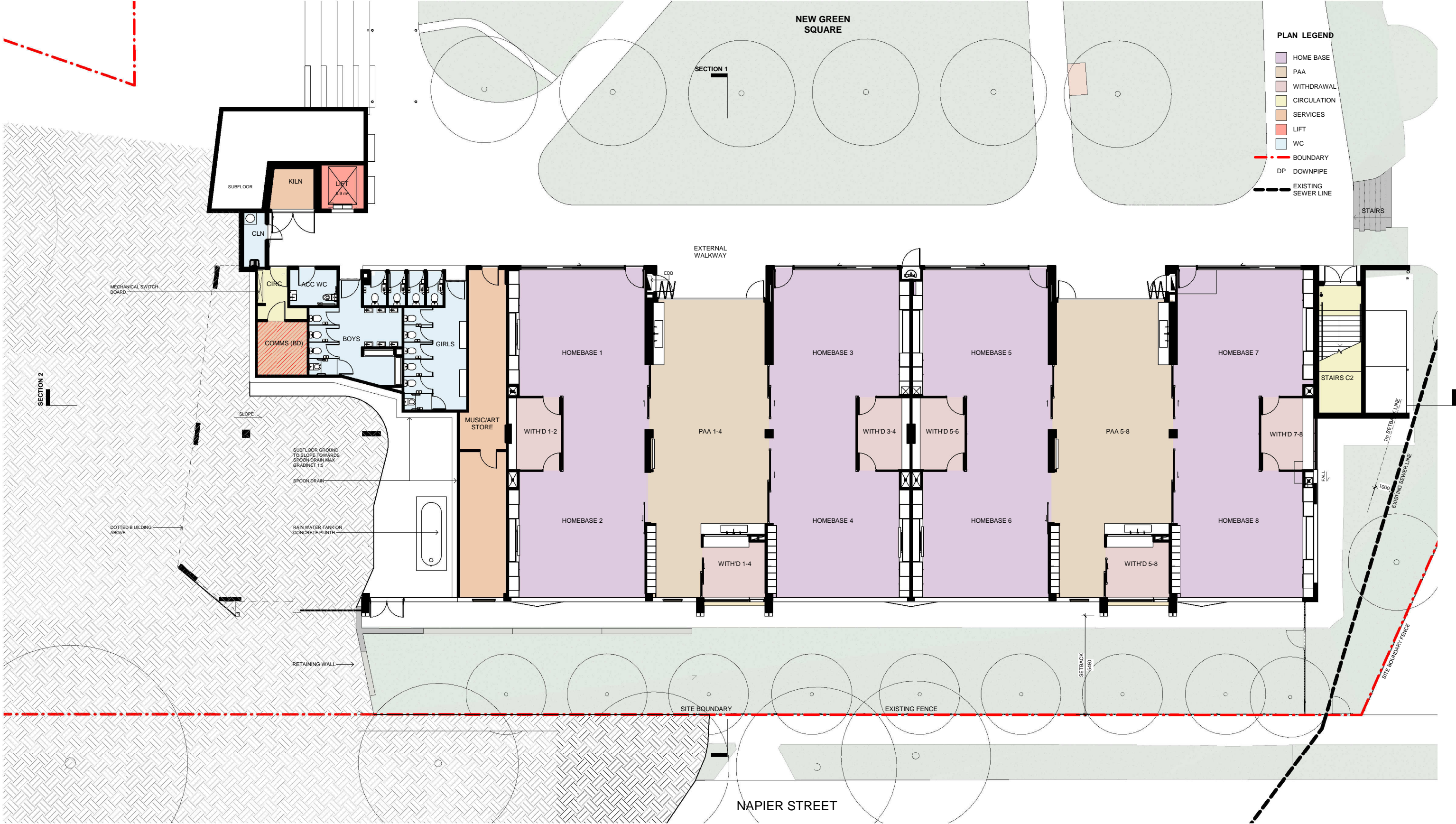
Architect
NBRSPARTNERSARCHITECTURE.
Sydney
61 2 9922 2344
Any form of replication of this drawing in full or in part without the written permission of NBRSPARTNERS Pty Ltd constitutes an infringement of the copyright.
Nominated Architects: Geoffrey Deane 3786; Andrew Duffin 5602; Garry Hoddinett 5286
ABN 16 002 247 565
nbrsarchitecture.com



Date
Scale 400@A1 or 800@A3

Drawing Reference
17343-NBRSPARTNERS-A-DA1-C02
Revision





GROUND FLOOR
1 : 100

| Issue | | |
|-------|------|-------------|
| No. | Date | Description |
| | | |

DEVELOPMENT
APPLICATION

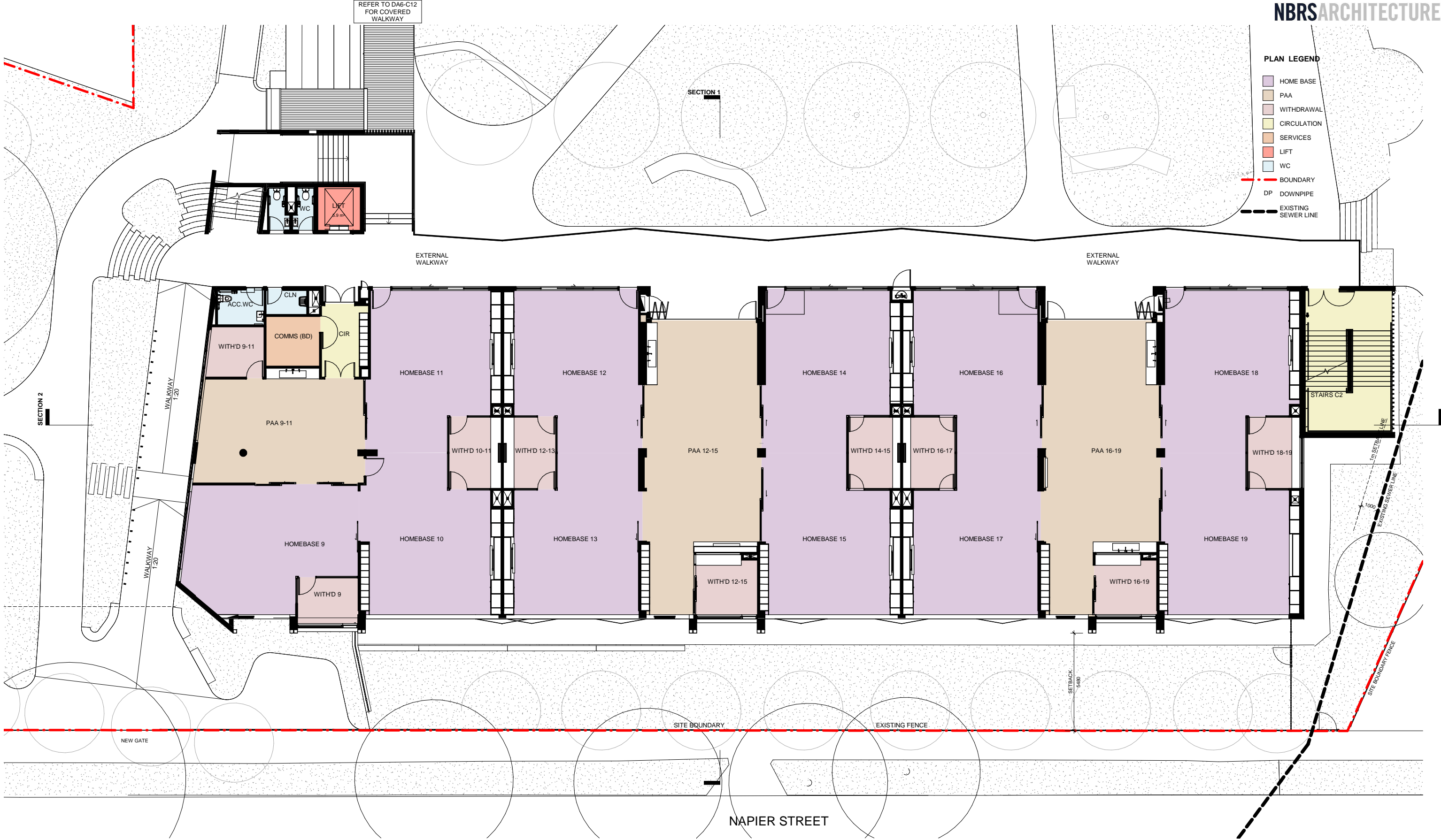
Drawing Title
BLOCK C - GROUND FLOOR PLAN

Project
Canterbury South Public School
at
20 High St, Canterbury NSW 2193
for
Department of Education

Architect
NBRSPARTNERSARCHITECTURE.
Sydney
61 2 9922 2344
Any form of replication of this drawing in full or in part without the written permission of NBRSPARTNERS Pty Ltd constitutes an infringement of the copyright.
Nominated Architects: Geoffrey Deane 3786; Andrew Duffin 5602; Garry Hodnett 5286
ABN 16 002 247 565



Date
Scale 100@A1 or 200@A3
Drawing Reference
17343-NBRSPARTNERS-A-DA2-C04
Revision



FIRST FLOOR
1 : 100

| Issue | | |
|-------|------|-------------|
| No. | Date | Description |
| | | |

DEVELOPMENT
APPLICATION

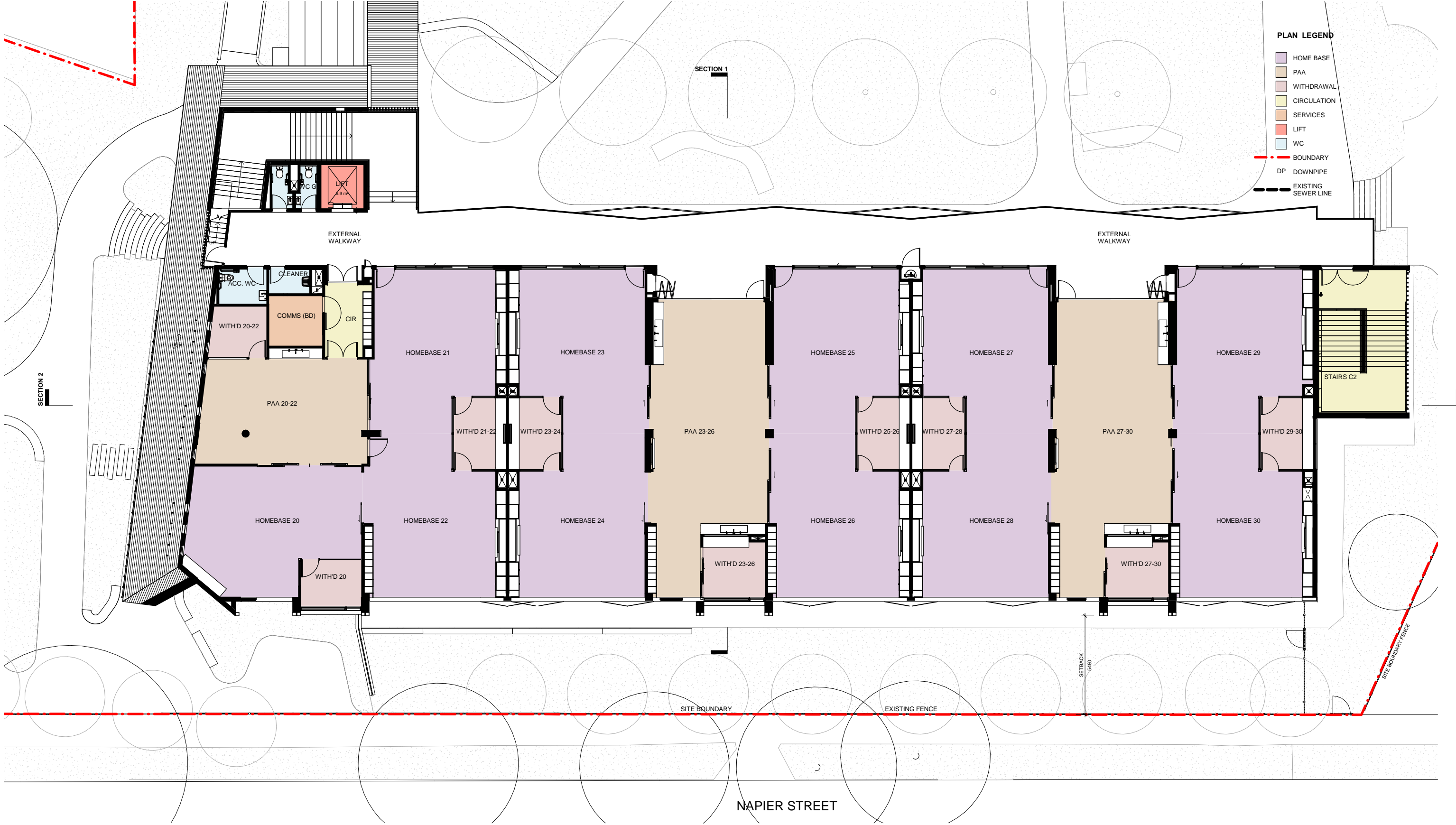
Drawing Title
BLOCK C - LEVEL 1 FLOOR PLAN

Project
Canterbury South Public School
at
20 High St, Canterbury NSW 2193
for
Department of Education

Architect
NBRSPARTNERSARCHITECTURE.
Sydney
61 2 9922 2344
Any form of replication of this drawing in full or in part, without the written permission of NBRSPARTNERS Pty Ltd constitutes an infringement of the copyright.
Nominated Architects: Geoffrey Deane 3786; Andrew Duffin 5602; Garry Hodnett 5286
ABN 16 002 247 565



Date
Scale 100@A1 or 200@A3
Drawing Reference
17343-NBRSPARTNERS-A-DA2-C05
Revision



SECOND FLOOR
1 : 100

| Issue | | |
|-------|------|-------------|
| No. | Date | Description |
| | | |

DEVELOPMENT
APPLICATION

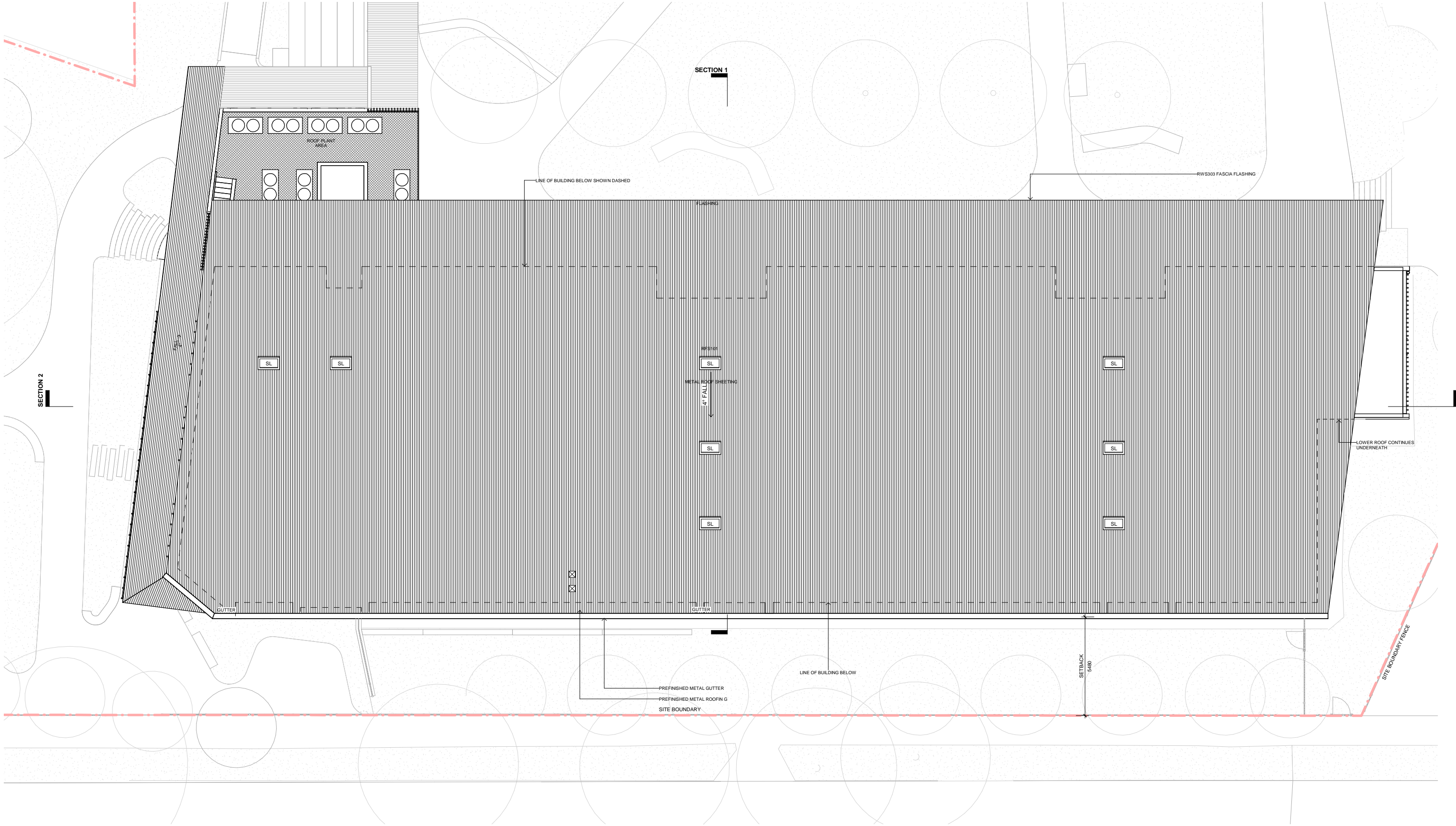
Drawing Title
BLOCK C - LEVEL 2 FLOOR PLAN

Project
Canterbury South Public School
at
20 High St, Canterbury NSW 2193
for
Department of Education

Architect
NBRARCHITECTURE.
Sydney
61 2 9922 2344
Any form of replication of this drawing in full or in part without the written permission of NBR+PARTNERS Pty Ltd constitutes an infringement of the copyright.
Nominated Architects: Geoffrey Deane 3786; Andrew Duffin 5602; Garry Hodnett 5286
ABN 16 002 247 565



Date
Scale 100@A1 or 200@A3
Drawing Reference
17343-NBRS-A-DA2-C06
Revision



ROOF PLAN
1 : 100

| Issue | | | Chkd |
|-------|------|-------------|------|
| No. | Date | Description | |
| | | | |

DEVELOPMENT
APPLICATION

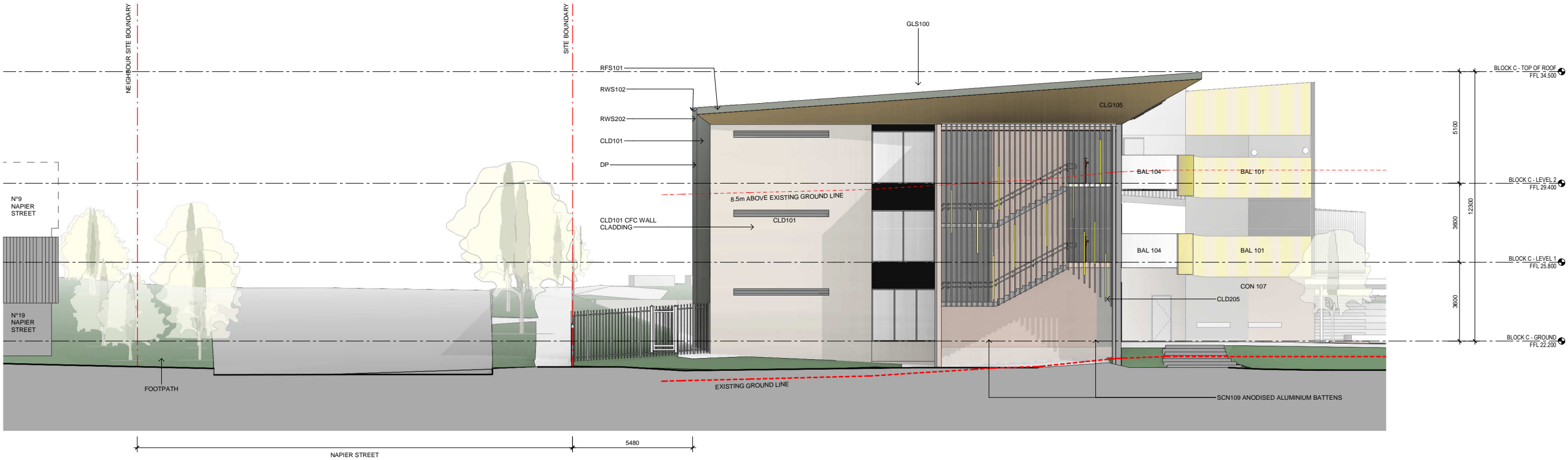
Drawing Title
BLOCK C - ROOF PLAN

Project
Canterbury South Public School
at
20 High St, Canterbury NSW 2193
for
Department of Education

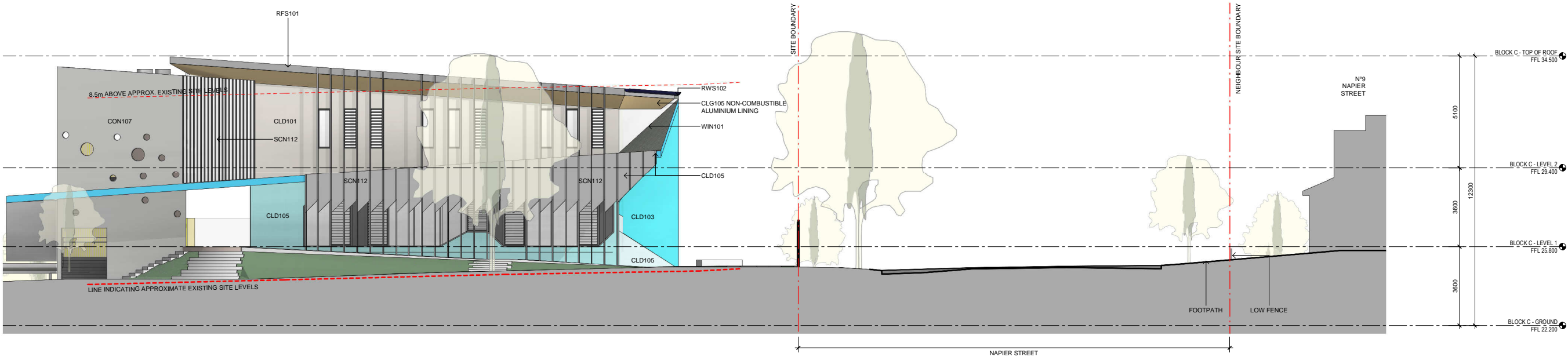
Architect
NBRSPARTNERSARCHITECTURE.
Sydney
61 2 9922 2344
nbrsarchitecture.com
Any form of replication of this drawing in full or in part, without the written permission of NBRSPARTNERS Pty Ltd constitutes an infringement of the copyright.
Nominated Architects: Geoffrey Deane 3786; Andrew Duffin 5602; Garry Hodnett 5286
ABN 16 002 247 565



Date
Scale 100@A1 or 200@A3
Drawing Reference
17343-NBRSPARTNERS-A-DA2-C07
Revision



BLOCK C - EAST ELEVATION
1 : 100



BLOCK C - WEST ELEVATION
1 : 100

| Issue | No. | Date | Description | Chkd |
|-------|-----|------|-------------|------|
| | | | | |

LEGEND

| | |
|--------|--------------------------------|
| BAL101 | ALUMINIUM BALUSTRADE |
| BAL104 | GLAZED BALUSTRADE |
| BAL105 | METAL BALUSTRADE + CFC INFILL |
| CAN104 | FOLDED ALUMINIUM AWNING |
| CAN106 | ALUMINIUM AWNING |
| CAN107 | ALUMINIUM SCREENING |
| CLD101 | CFC WALL CLADDING NATURAL GREY |

| | |
|--------|----------------------------------|
| CLD105 | CFC WALL CLADDING PAINTED |
| CLD106 | CFC WALL CLADDING PAINTED |
| CLD109 | CFC WALL CLADDING PAINTED |
| CLD203 | ALUMINIUM COVER PLATES |
| CLD205 | ALUMINIUM TRIM |
| CLG105 | NON-COMBUSTIBLE ALUMINIUM LINING |
| GLS100 | GLAZING |

| | |
|--------|----------------------------|
| RFS101 | PREFINISHED METAL ROOFING |
| RWS102 | EAVES GUTTER |
| RWS301 | RAINWATER HEAD |
| SCN109 | ANODIZED ALUMINIUM BATTENS |
| WIN101 | WINDOW FRAME |

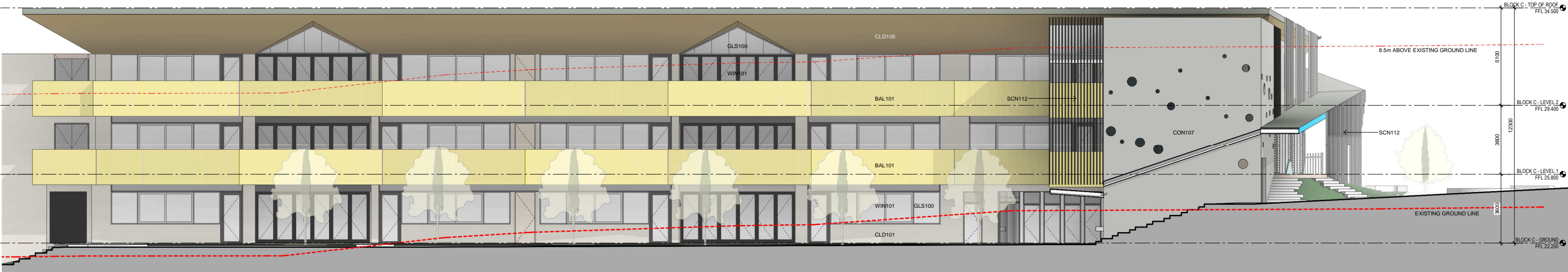
DEVELOPMENT
APPLICATION

Drawing Title
BLOCK C - ELEVATIONS

Project
Canterbury South Public School
at
20 High St, Canterbury NSW 2193
for
Department of Education

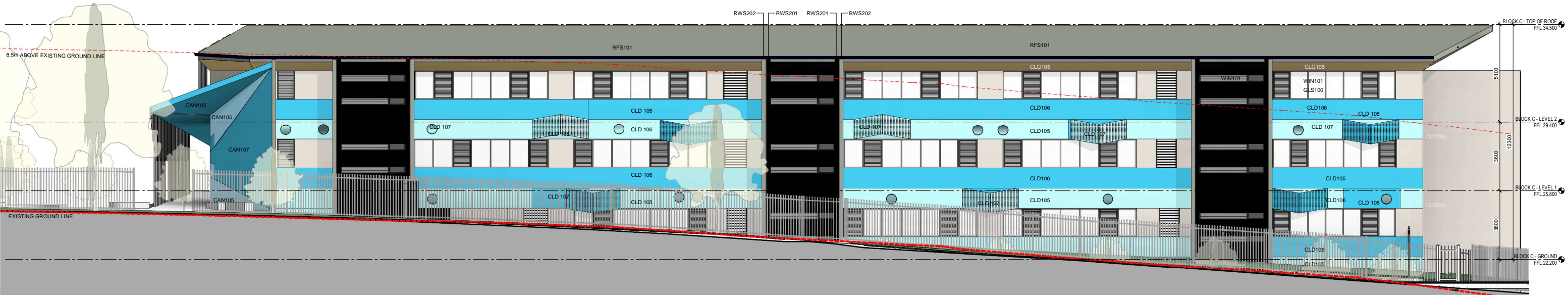
Architect
NBRARCHITECTURE.
Sydney
61 2 9922 2344
Any form of replication of this drawing in full or in part without the written permission of NBR+PARTNERS Pty Ltd constitutes an infringement of the copyright.
Nominated Architects: Geoffrey Deane 3786; Andrew Duffin 5602; Garry Hoddinett 5286
ABN 16 002 247 565
nbrsarchitecture.com

Date
Scale 100@A1 or 200@A3
Drawing Reference
17343-NBR-A-DA3-C08
Revision



BLOCK C - NORTH ELEVATION

1 : 100



BLOCK C - SOUTH ELEVATION

1 : 100

| Issue | No. | Date | Description | Chkd |
|-------|-----|------|-------------|------|
| | | | | |

LEGEND

BAL101 ALUMINIUM BALUSTRADE
BAL108 ALUMINIUM BALUSTRADE
CAN104 ALUMINIUM AWNING
CAN106 ALUMINIUM AWNING
CAN107 ALUMINIUM SCREENING
CAN108 ALUMINIUM SCREENING

CLD101 CFC WALL CLADDING NATURAL GREY
CLD103 CFC WALL CLADDING PAINTED
CLD104 CFC WALL CLADDING PAINTED
CLD105 CFC WALL CLADDING PAINTED
CLD106 CFC WALL CLADDING PAINTED
CLD203 ALUMINIUM COVER PLATE

CLG105 NON-COMBUSTIBLE ALUMINIUM LINING
GLS100 GLAZING
RFS101 PREFINISHED METAL ROOFING
SCN112 ALUMINIUM SCREEN
WIN101 WINDOW FRAME

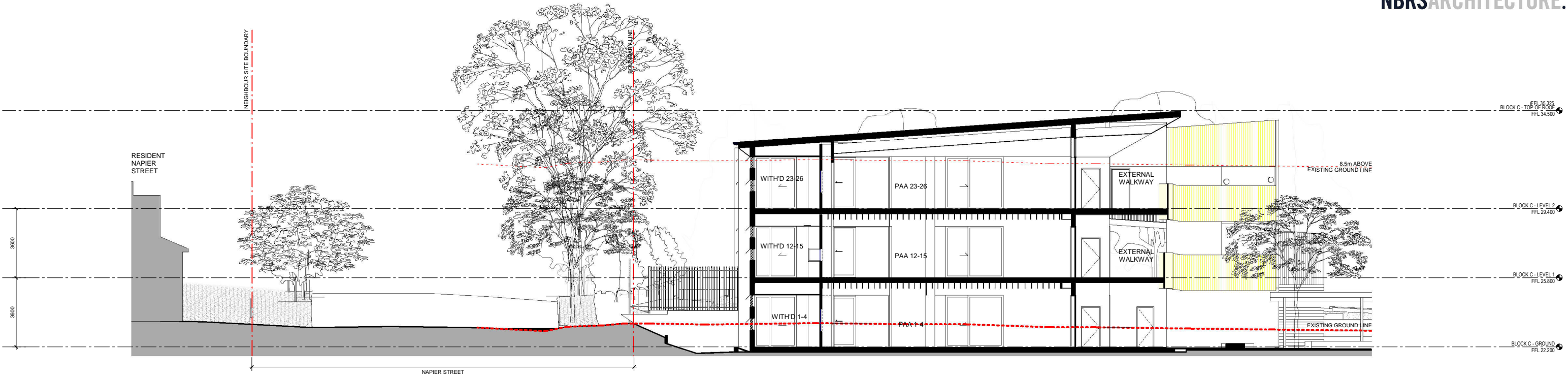
DEVELOPMENT
APPLICATION

Drawing Title
BLOCK C - ELEVATIONS

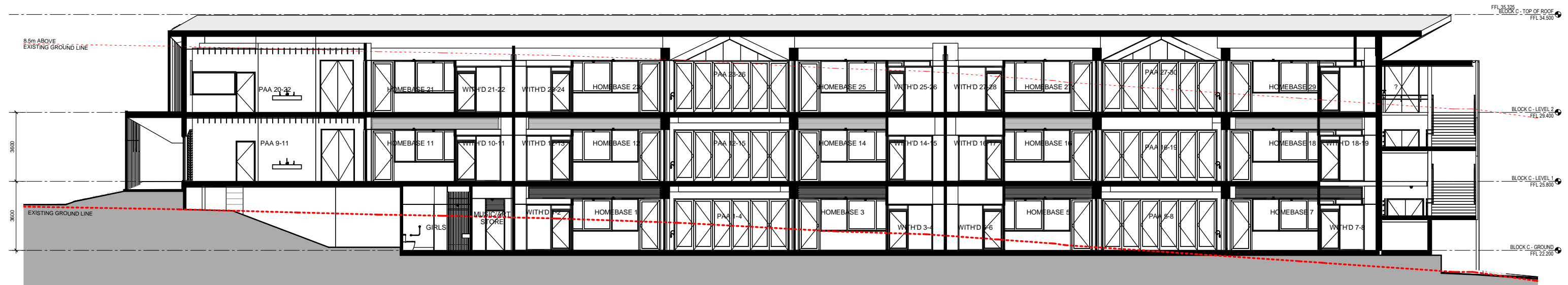
Project
Canterbury South Public School
at
20 High St, Canterbury NSW 2193
for
Department of Education

Architect
NBRSPARTNERSARCHITECTURE.
Sydney
61 2 9922 2344
Any form of replication of this drawing in full or in part, without the written permission of NBRSPARTNERS Pty Ltd constitutes an infringement of the copyright.
Nominated Architects: Geoffrey Deane 3786; Andrew Duffin 5602; Garry Hodnett 5286
ABN 16 002 247 565

Date
Scale 100@A1 or 200@A3
Drawing Reference
17343-NBRS-A-DA3-C09
Revision



BLOCK C - SECTION 1
1 : 100



BLOCK C - SECTION 2
1 : 100

| Issue | | |
|-------|------|-------------|
| No. | Date | Description |
| | | |

DEVELOPMENT
APPLICATION

Drawing Title
BLOCK C - SECTIONS

Project
Canterbury South Public School
at
20 High St, Canterbury NSW 2193
for
Department of Education

Architect
NBRSPARTNERSARCHITECTURE.
Sydney
61 2 9922 2344
Any form of replication of this drawing in full or in part without the written permission of NBRSPARTNERS Pty Ltd constitutes an infringement of the copyright.
Nominated Architects: Geoffrey Deane 3786; Andrew Duffin 5602; Garry Hodnett 5286
ABN 16 002 247 565
© 2017

Date
Scale 100@A1 or 200@A3
Drawing Reference
17343-NBRS-A-DA4-C10
Revision



VIEW FROM NAPIER STREET

| Issue | | | |
|-------|------|-------------|------|
| No. | Date | Description | Chkd |
| | | | |

DEVELOPMENT
APPLICATION

Drawing Title
PHOTOMONTAGE - VIEW FROM
NAPIER STREET

Project
Canterbury South Public School
at
20 High St, Canterbury NSW 2193
for
Department of Education

Architect
NBRSEARCHITECTURE.
Sydney
61 2 9922 2344
nbrsarchitecture.com
Any form of replication of this drawing in full or in part without the written permission
of NBRSEARCHITECTURE Pty Ltd constitutes an infringement of the copyright.
Nominated Architects: Geoffrey Deane 3766; Andrew Duffin 5602; Garry Hoddinett 5286
ABN 16 002 247 565
© 2017

Date
NOT TO SCALE
Drawing Reference
17343-NBRSEARCHITECTURE-A-DA5-C11
Revision



VIEW FROM GREEN SQUARE

| Issue | | | |
|-------|------|-------------|------|
| No. | Date | Description | Chkd |
| | | | |

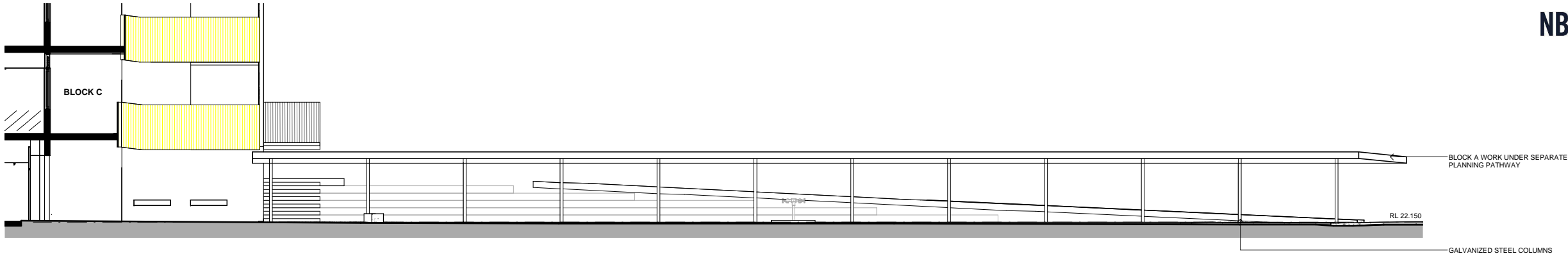
DEVELOPMENT
APPLICATION

Drawing Title
ARTIST IMPRESSION - VIEW FROM
TOWN SQUARE

Project
Canterbury South Public School
at
20 High St, Canterbury NSW 2193
for
Department of Education

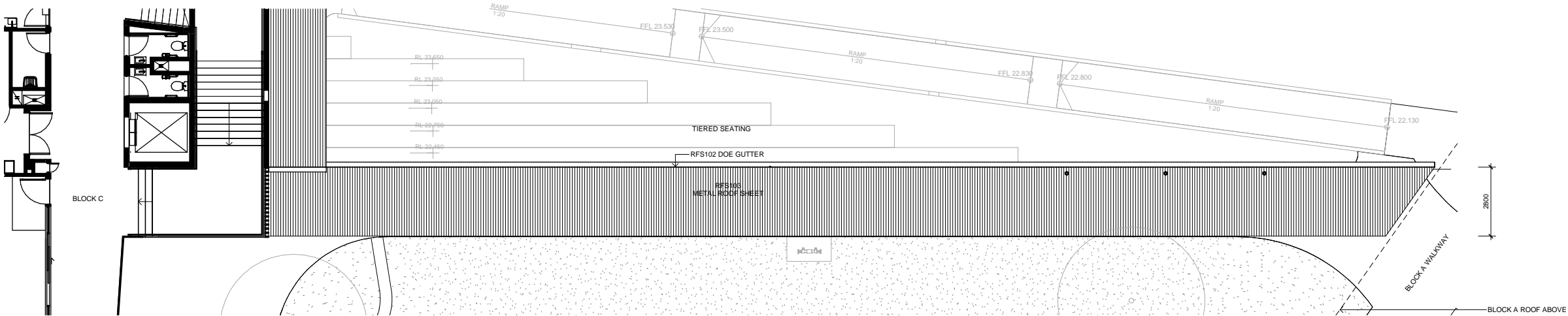
Architect
NBRARCHITECTURE.
Sydney
61 2 9922 2344
nbrsarchitecture.com
Any form of replication of this drawing in full or in part without the written permission
of NBR+PARTNERS Pty Ltd constitutes an infringement of the copyright.
Nominated Architects: Geoffrey Deane 3766; Andrew Duffin 5602; Garry Hoddinett 5286
ABN 16 002 247 565
© 2017

Date
NOT TO SCALE
Drawing Reference
17343-NBR-A-DA5-C12
Revision



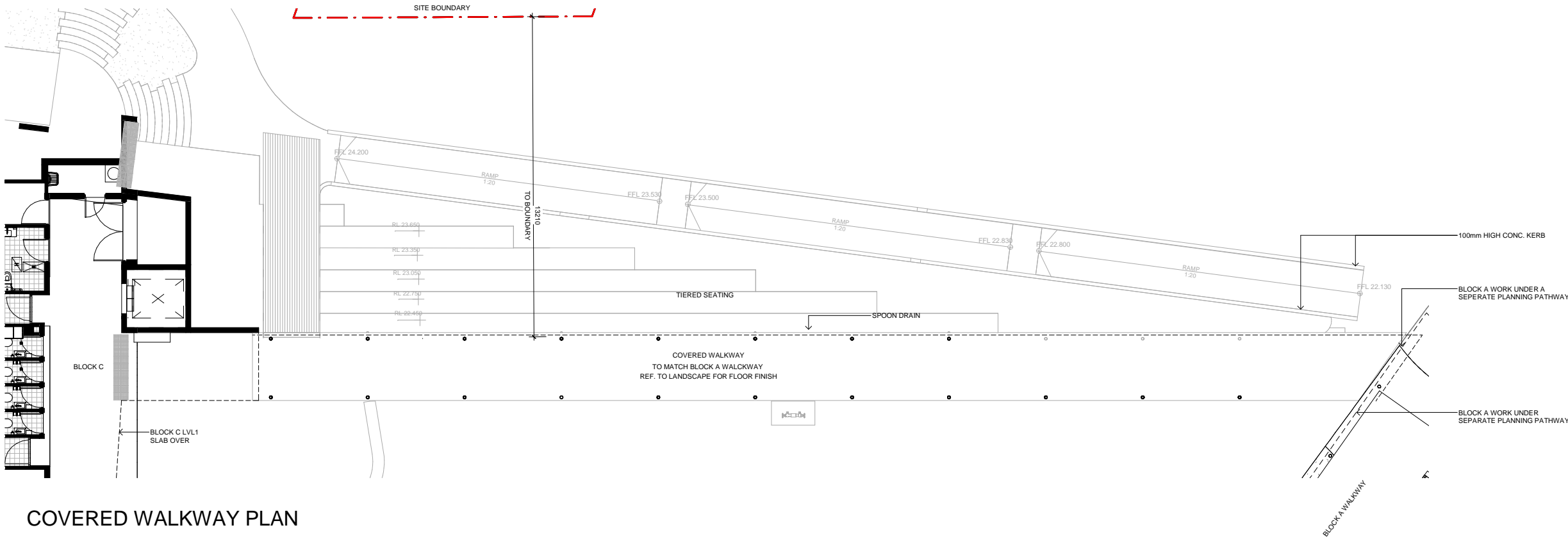
COVERED WALKWAY ELEVATION

1 : 100



COVERED WALKWAY ROOF

1 : 100



COVERED WALKWAY PLAN

1 : 100

| Issue | | | Chkd |
|-------|------|-------------|------|
| No. | Date | Description | |
| | | | |

DEVELOPMENT
APPLICATION

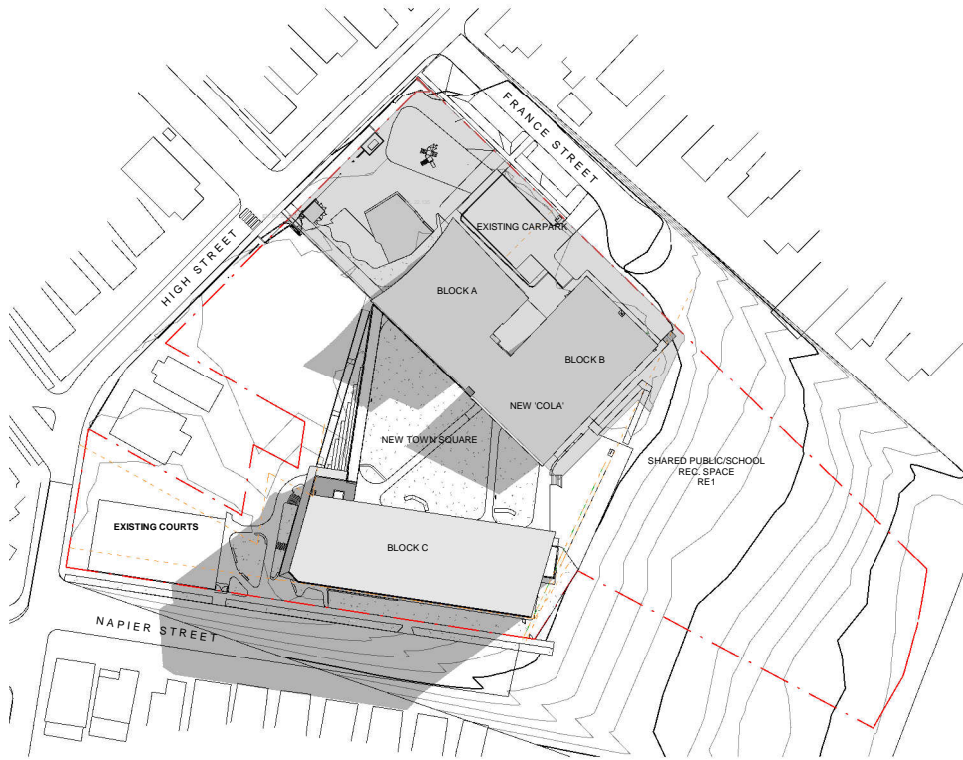
Drawing Title
COVERED WALKWAY

Project
Canterbury South Public School
at
20 High St, Canterbury NSW 2193
for
Department of Education

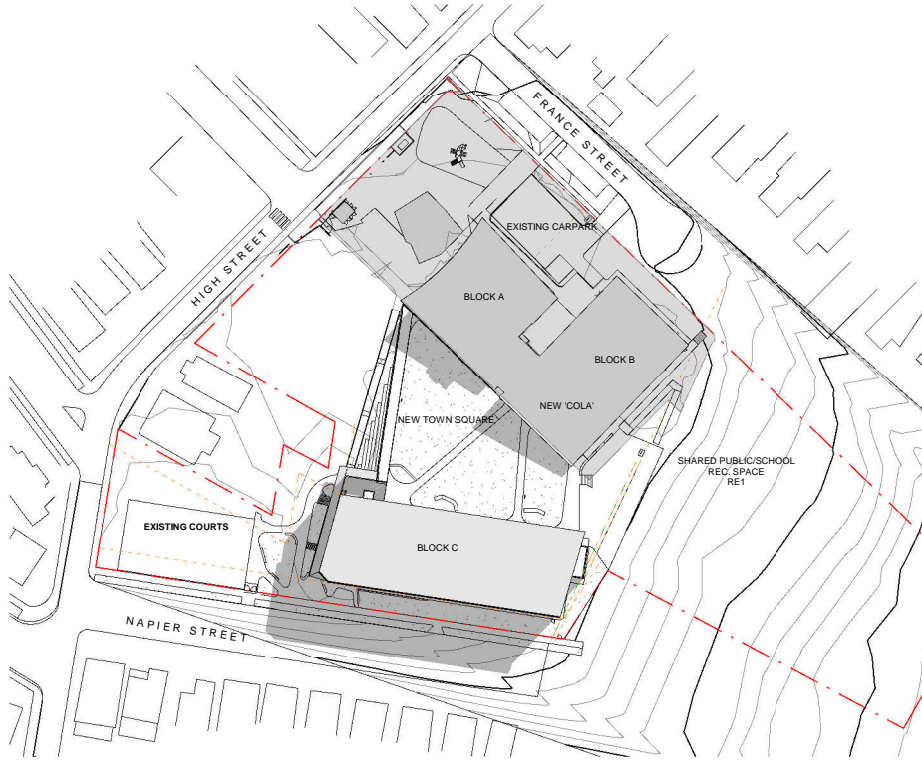
Architect
NBRSARCHITECTURE.
Sydney
61 2 9922 2344
Any form of replication of this drawing in full or in part without the written permission of NBRS+PARTNERS Pty Ltd constitutes an infringement of the copyright.
Nominated Architects: Geoffrey Deane 3786; Andrew Duffin 5602; Garry Hodnett 5286
ABN 16 002 247 565
nbrsarchitecture.com



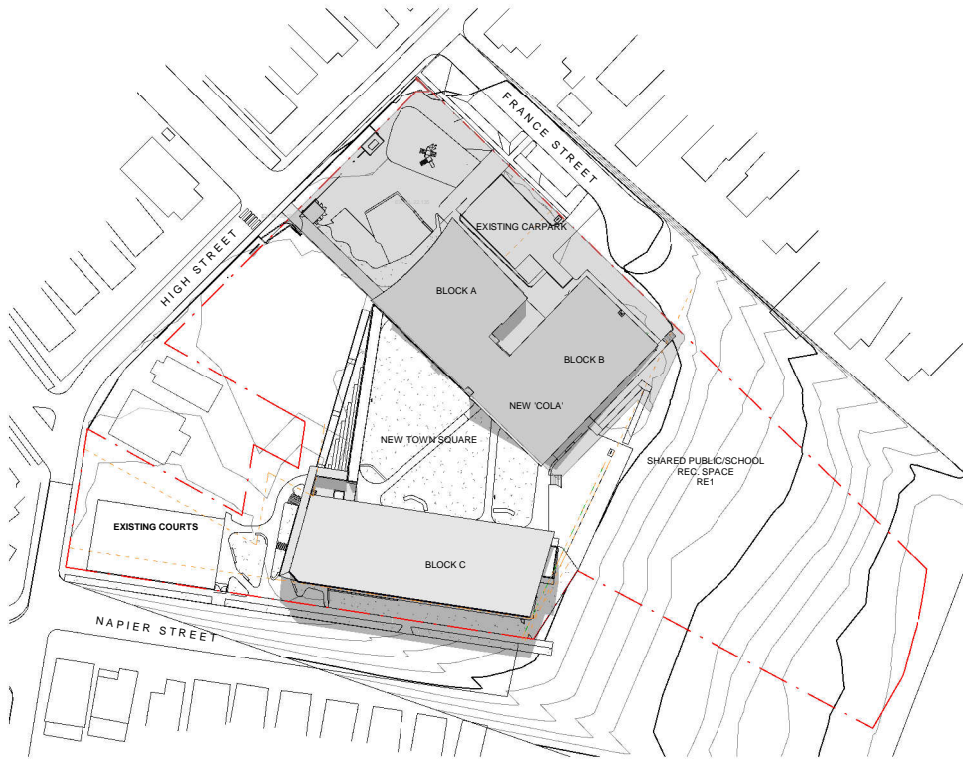
Date
Scale 100@A1 or 200@A3
Drawing Reference
17343-NBRS-A-DA6-C13
Revision



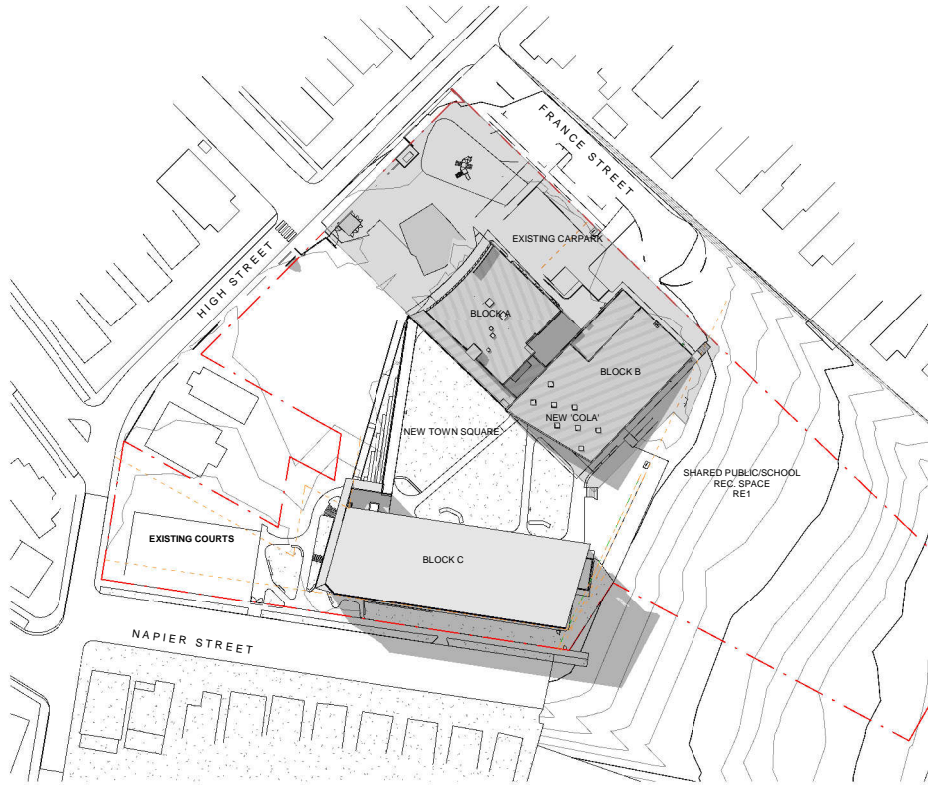
1 JUNE 8AM
1 : 1000



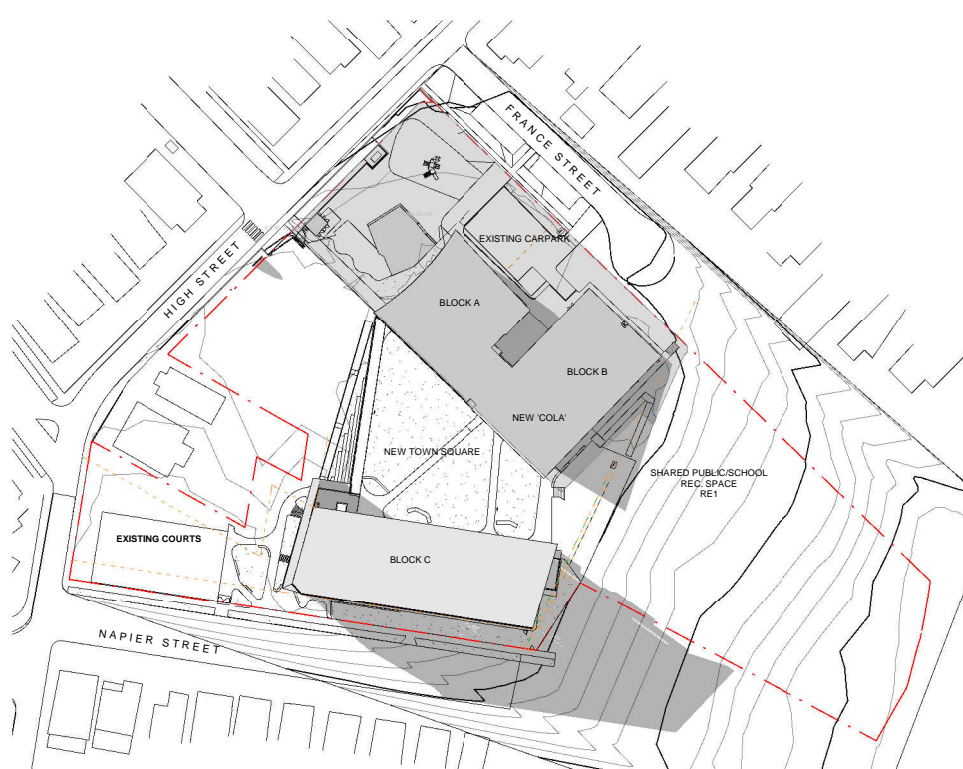
2 JUNE 9AM
1 : 1000



3 JUNE 12PM
1 : 1000



4 JUNE 3PM
1 : 1000



5 JUNE 4PM
1 : 1000

DEVELOPMENT
APPLICATION

Drawing Title
SHADOW DIAGRAMS - PLAN
SHEET 1

Project
Canterbury South Public School
at
20 High St, Canterbury NSW 2193
for
Department of Education

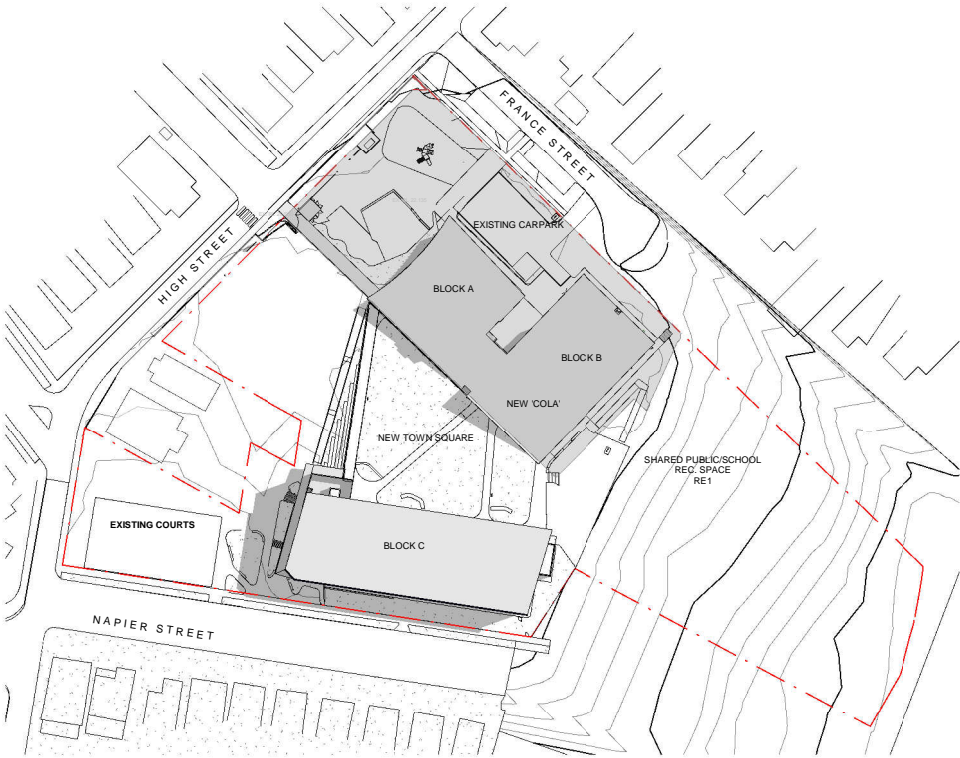
Architect
NBRARCHITECTURE.
Sydney
61 2 9922 2344
Any form of replication of this drawing in full or in part without the written permission of NBR+PARTNERS Pty Ltd constitutes an infringement of the copyright.
Nominated Architects: Geoffrey Deane 3786; Andrew Duffin 5602; Garry Hodnett 5286
ABN 16 002 247 565
nbrsarchitecture.com



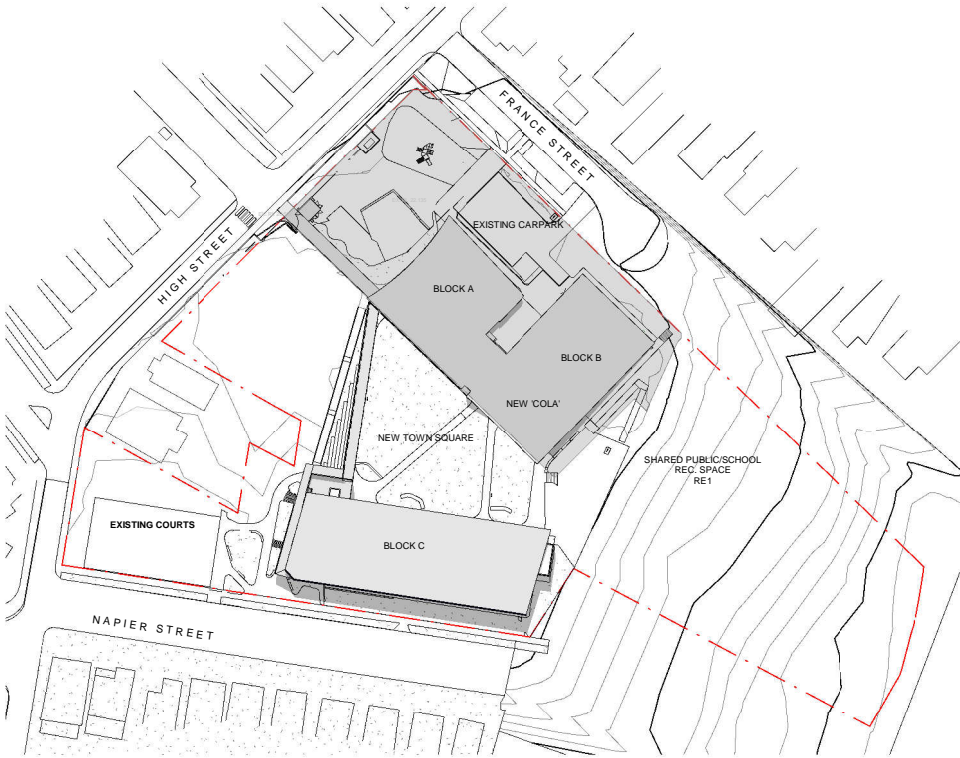
Date
Scale 1000@A1 or 2000@A3

Drawing Reference
17343-NBRS-A-DA8-C14
Revision

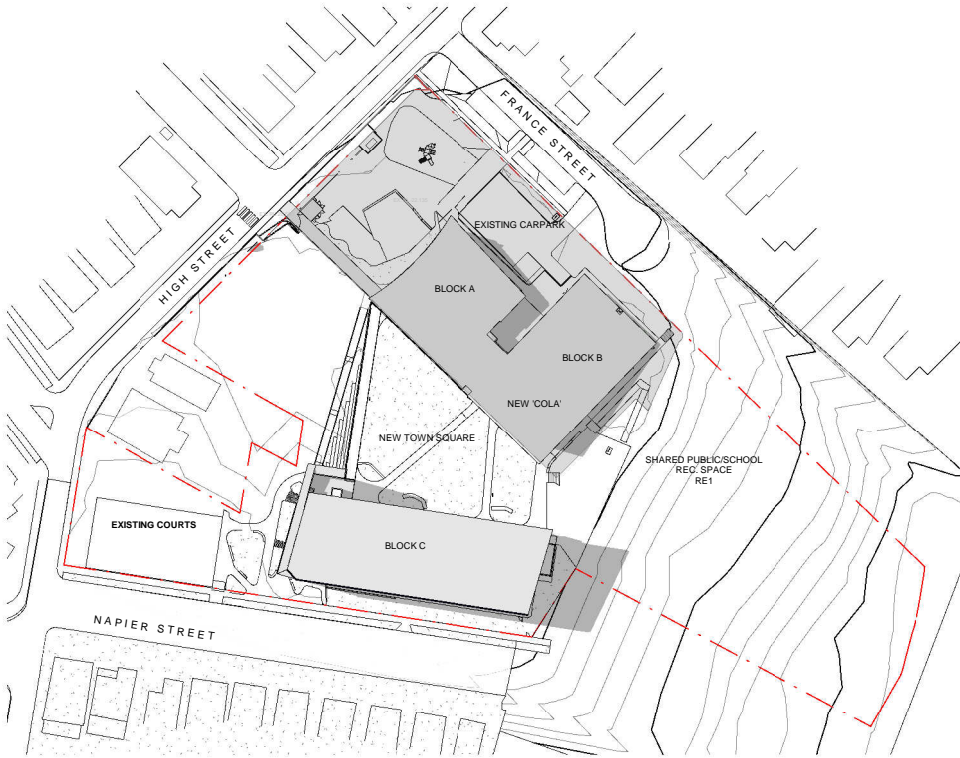
| Issue | No. | Date | Description | Chkd |
|-------|-----|------|-------------|------|
| | | | | |



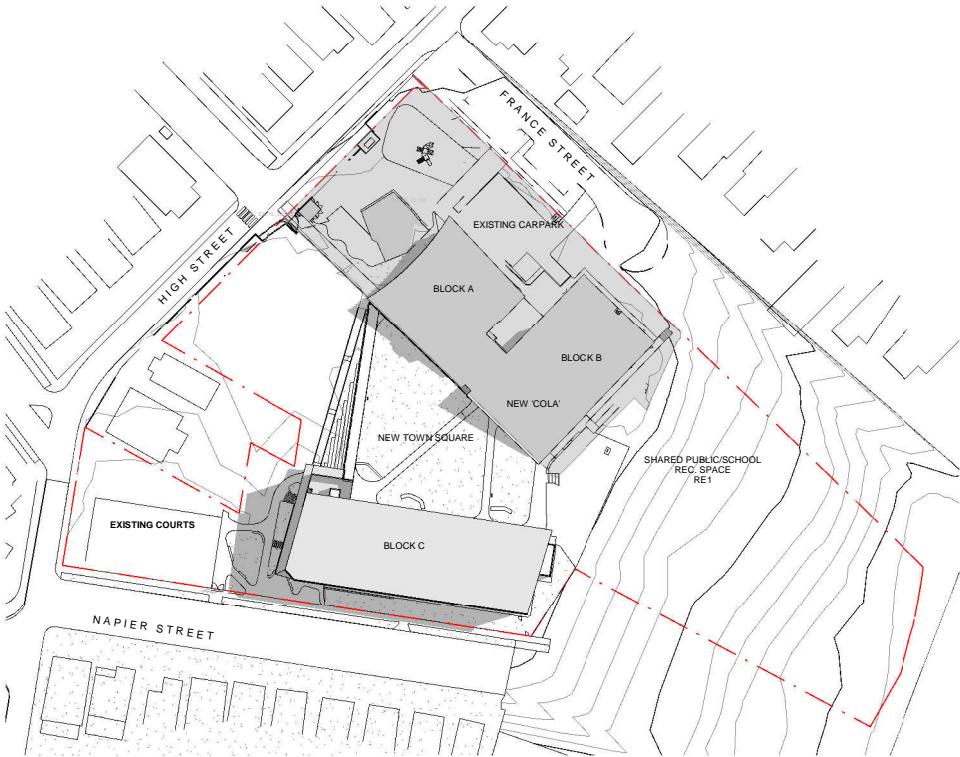
1 SEP 8AM
1 : 1000



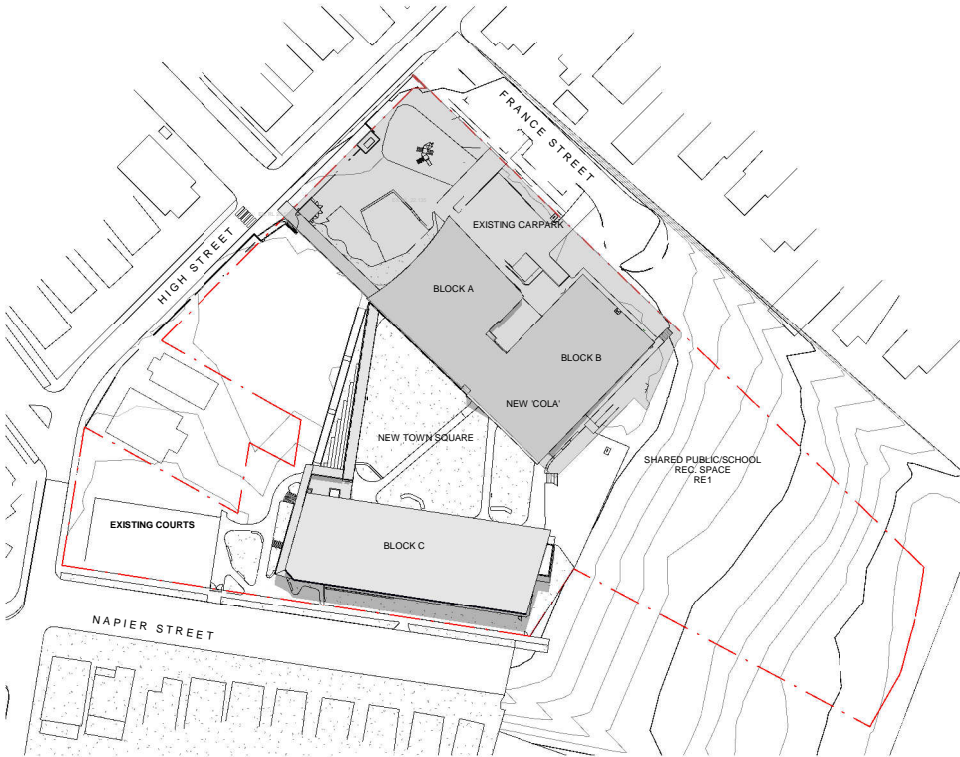
2 SEP 12PM
1 : 1000



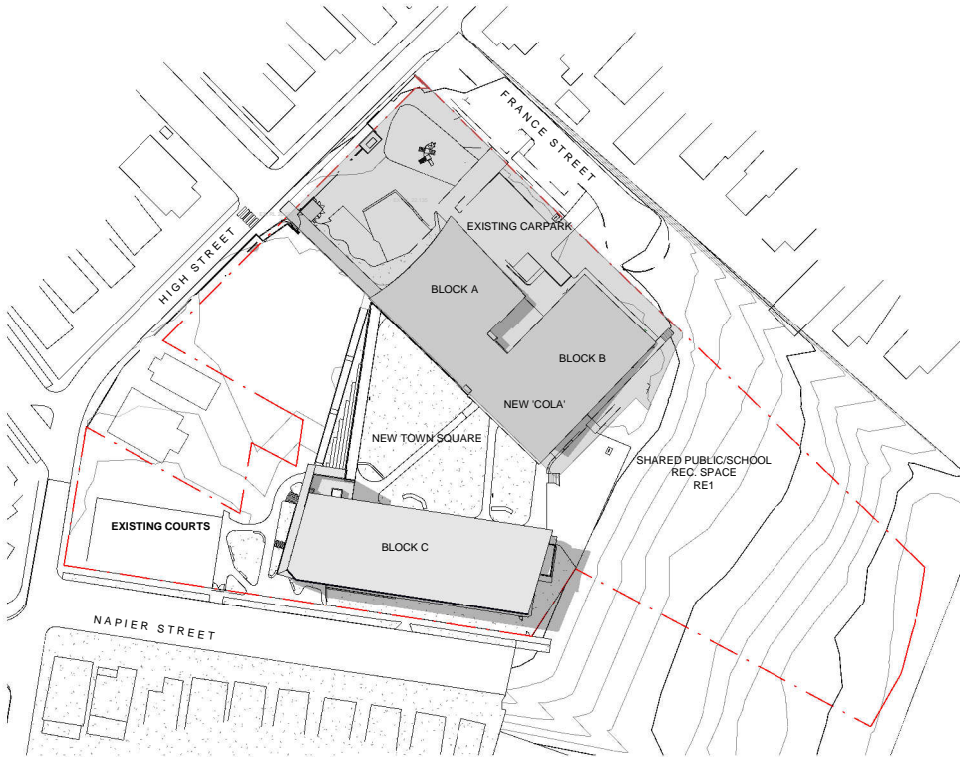
3 SEP 4PM
1 : 1000



4 MAR 8AM
1 : 1000



5 MAR 12PM
1 : 1000



6 MAR 3PM
1 : 1000

| Issue | | | Chkd |
|-------|------|-------------|------|
| No. | Date | Description | |
| | | | |

DEVELOPMENT
APPLICATION

Drawing Title
SHADOW DIAGRAMS - PLAN
SHEET 2

Project
Canterbury South Public School
at
20 High St, Canterbury NSW 2193
for
Department of Education

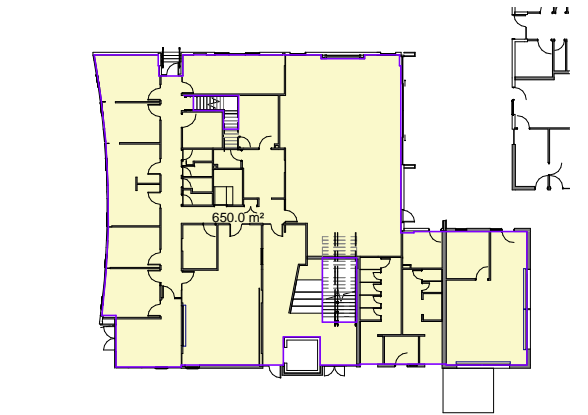
Architect
NBRARCHITECTURE.
Sydney
61 2 9922 2344
nbrsarchitecture.com
Any form of replication of this drawing in full or in part without the written permission
of NBR+PARTNERS Pty Ltd constitutes an infringement of the copyright.
Nominated Architects: Geoffrey Deane 3786; Andrew Duffin 5602; Garry Hodnett 5286
ABN 16 002 247 565

1

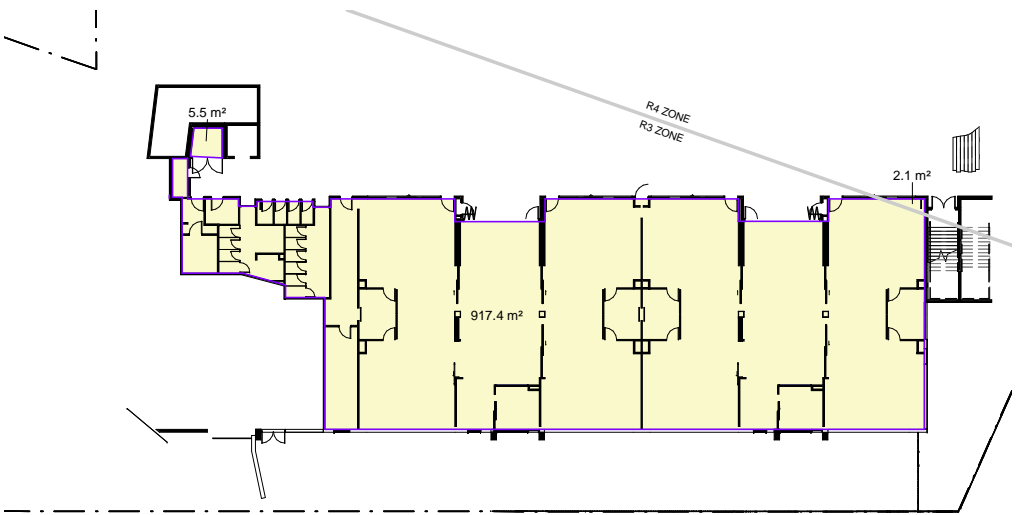
Date
Scale 1000@A1 or 2000@A3

Drawing Reference
17343-NBR-A-DA8-C15

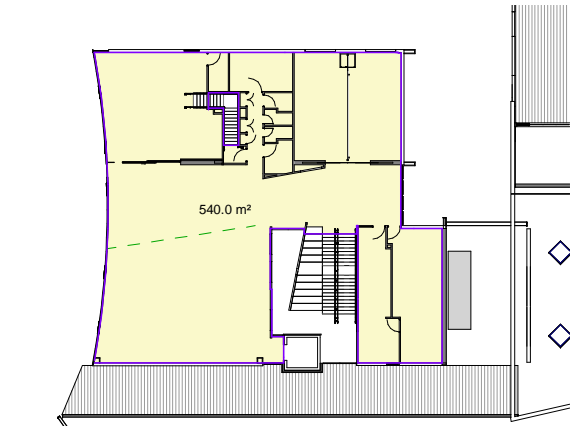
Revision



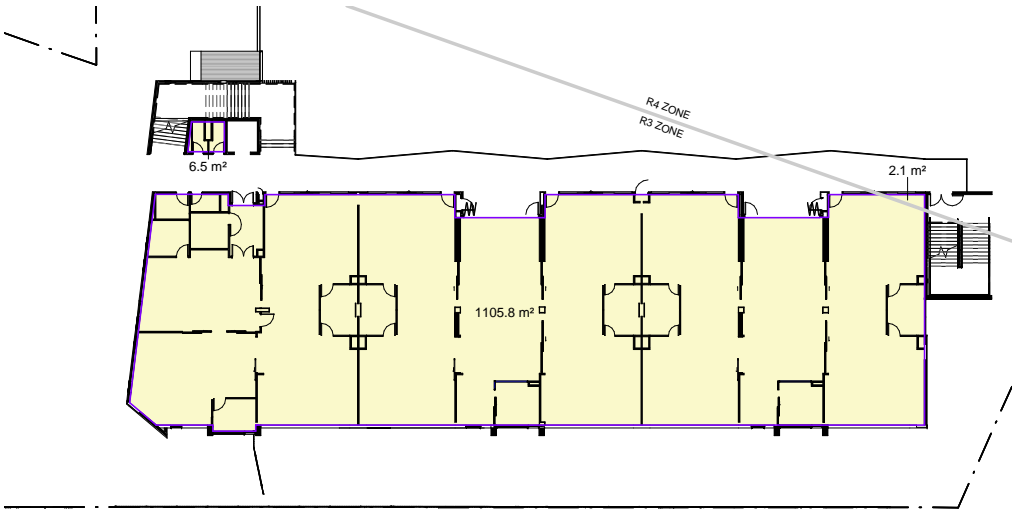
1 BLOCK A - GROUND FLOOR
1 : 300



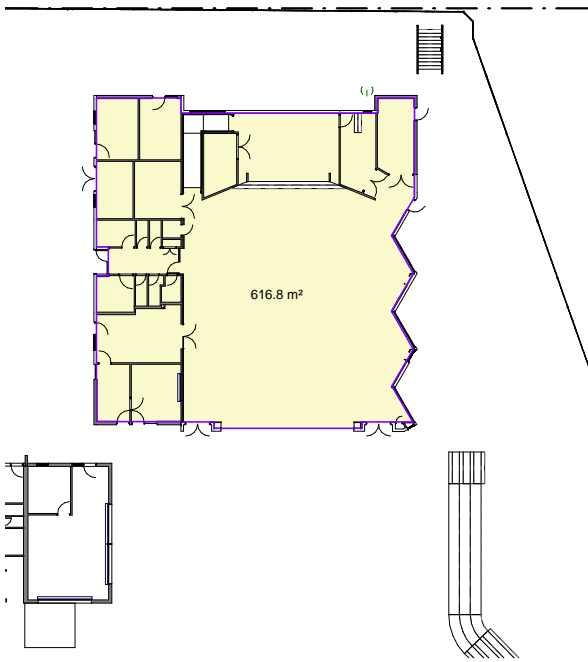
4 BLOCK C - GROUND FLOOR
1 : 300



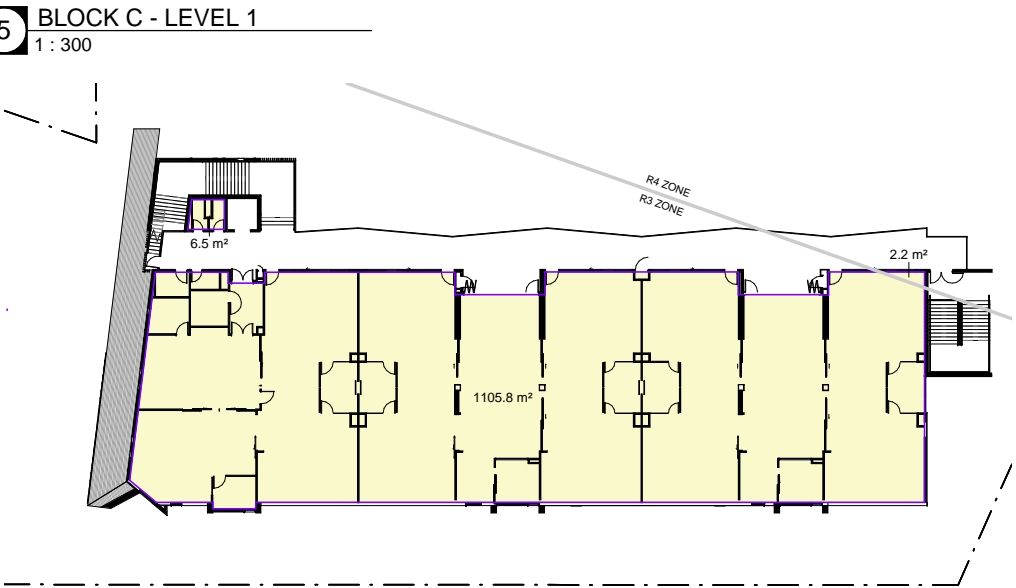
2 BLOCK A - LEVEL 1
1 : 300



5 BLOCK C - LEVEL 1
1 : 300



3 BLOCK B - GROUND FLOOR
1 : 300



6 BLOCK C - LEVEL 2
1 : 300



7 ZONING PLAN
1 : 1000

SITE AREA

R4 AREA = 8962m²
R3 AREA = 4226m²
RE1 AREA = 4832m²

TOTAL: 18020 m²

EXISTING AREA

TOTAL : 1822.6 m²
(ALL DEMOLISHED)

FSR CALCULATION

R4 FSR:
 $1813.1\text{m}^2 / 8962\text{m}^2 = 0.2023$
NOTE: THESE WORKS ARE NOT PART OF THE DA. HOWEVER FSR CALCULATION PROVIDE AN OVERALL FSR FOR THE SITE

R3 FSR:
 $3147.5\text{m}^2 / 4226\text{m}^2 = 0.7448$

RE1 FSR:
 $0\text{m}^2 / 4898\text{m}^2 = 0$

PROPOSED AREA

R4 AREA
TOTAL : 1813.1m²
(WORKS SUBJECT TO A SEPARATE PLANNING PATHWAY ACCOUNT FOR 1806.6m²)

R3 AREA
TOTAL : 3147.5m²

RE1 AREA
TOTAL : 0m²

TOTAL : 4960.6m²

OVERALL SITE FSR:

$4960.6\text{m}^2 / 13188\text{m}^2 = 0.3761:1$
(NOT INCLUDING RE1 ZONE)

$4960.6\text{m}^2 / 18020\text{m}^2 = 0.27:1$
(INCLUDING RE1 ZONE)

| Issue | | | |
|-------|------|-------------|------|
| No. | Date | Description | Chkd |
| | | | |

DEVELOPMENT
APPLICATION

Drawing Title
FSR CALCULATION

Project
Canterbury South Public School

at
20 High St, Canterbury NSW 2193

for
Department of Education

Architect
NBRSEARCHITECTURE.
Sydney
61 2 9922 2344
Any form of replication of this drawing in full or in part without the written permission of NBRSEARCHITECTURE Pty Ltd constitutes an infringement of the copyright.
Nominated Architects: Geoffrey Deane 3766; Andrew Duffin 5602; Garry Hoddinett 5286
ABN 16 002 247 565

Date

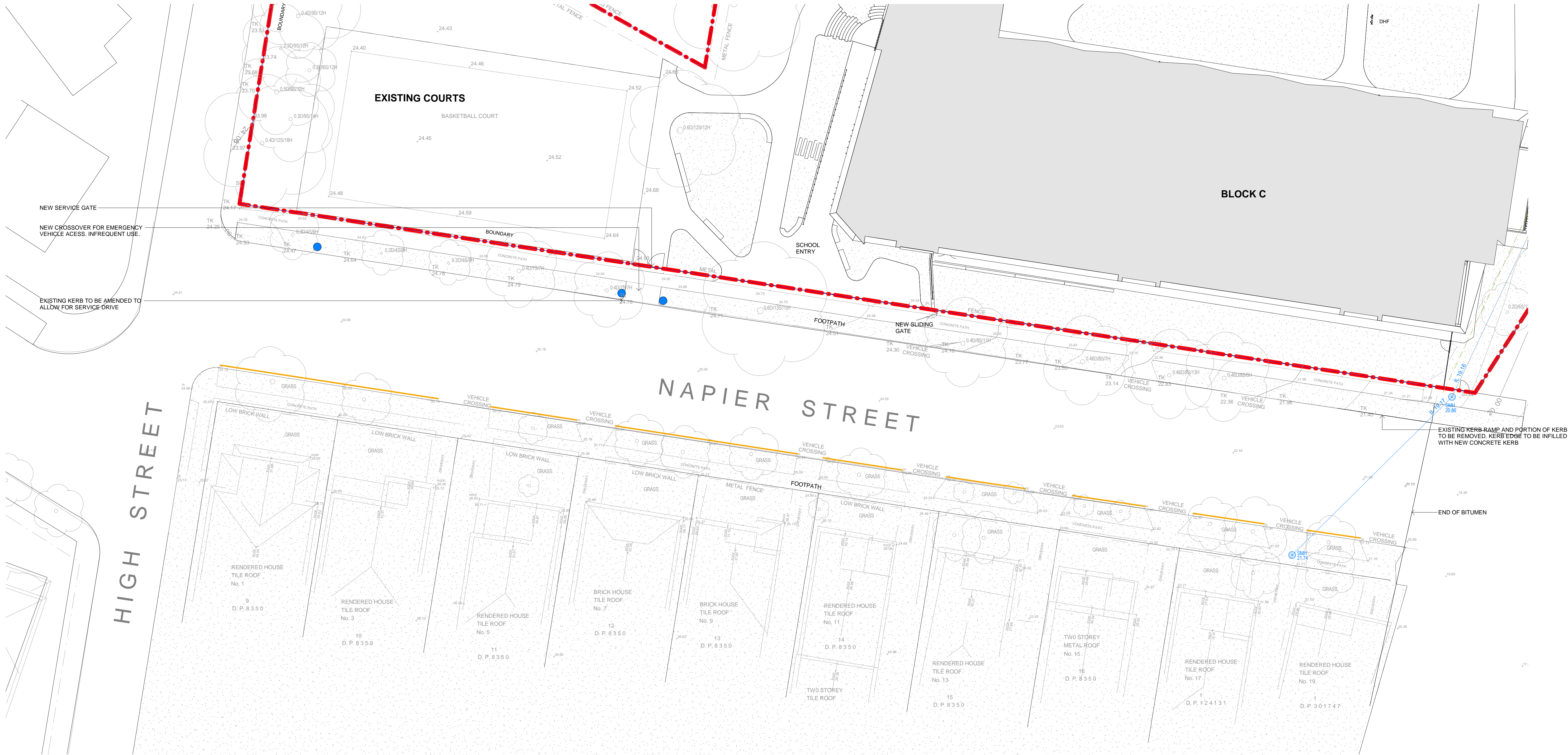
Drawing Reference
17343-NBRS-A-DA8-C16

Revision

© 2017 10 11 12 13 14 15 16 17 18 19 20

LEGEND

- SIGNAGE PER TRAFFIC REPORT SPECIFICATION
- KERBSIDE LINEMARKING FOR NON STOP RESTRICTION AS PER TRAFFIC REPORT
- - - BOUNDARY



| Issue No. | Date | Description | Chkd |
|-----------|------|-------------|------|
| | | | |

DEVELOPMENT APPLICATION

Drawing Title
NAPIER STREET PARKING

Project
Canterbury South Public School

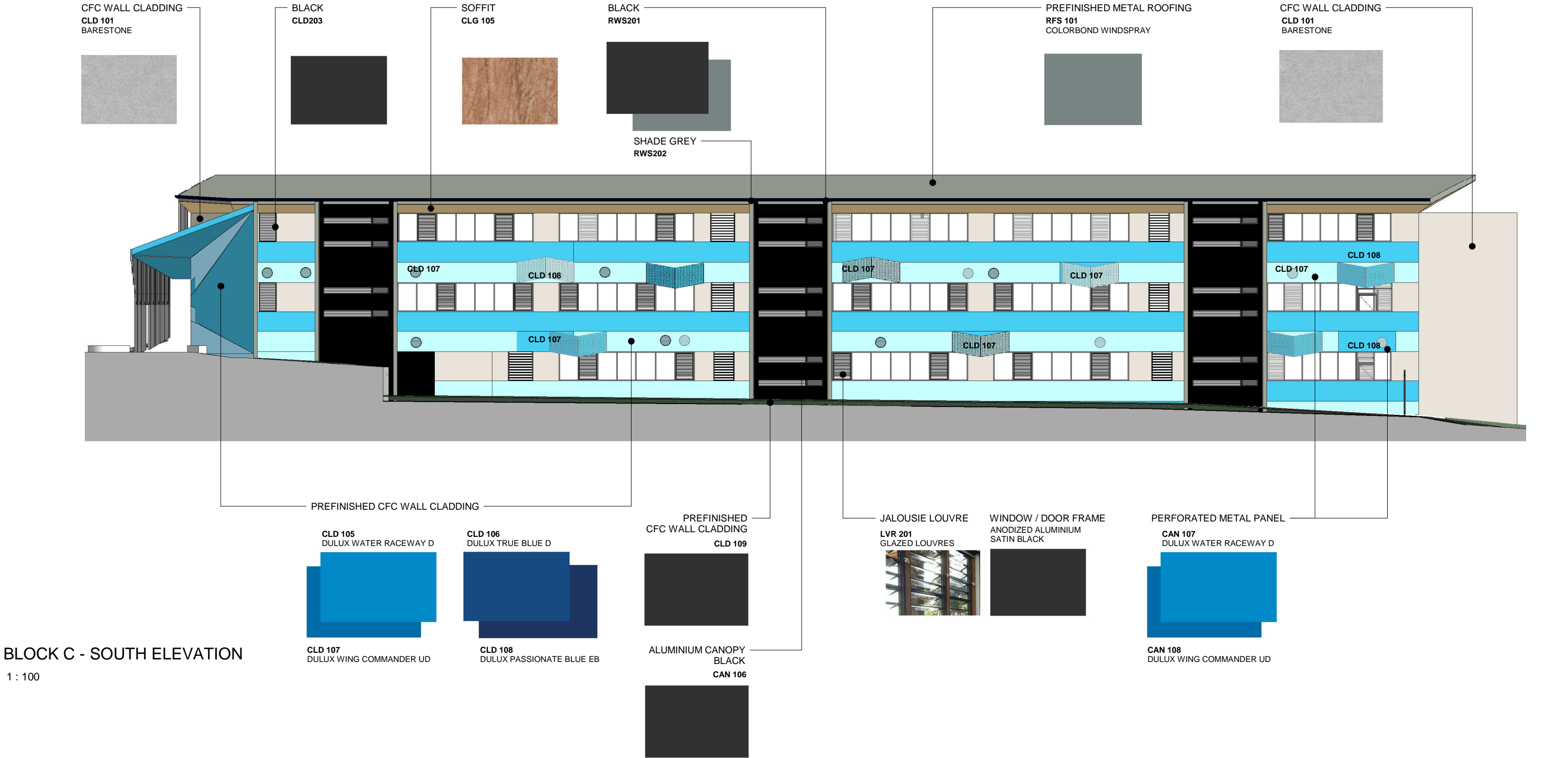
at
20 High St, Canterbury NSW 2193
for
Department of Education

Architect
Sydney
61 2 9922 2344
Any form of replication of this drawing in full or in part without the written permission of NBRSPARTNERS Pty Ltd constitutes an infringement of the copyright.
Nominated Architects: Geoffrey Deane 3766; Andrew Duffin 5602; Garry Hoddinett 5286
ABN 16 002 247 565
nbrsarchitecture.com

1

Date
Scale 200@A1 or 400@A3

Drawing Reference
17343-NBRSPARTNERS
Revision



| Issue No. | Date | Description | Chkd |
|-----------|------|-------------|------|
| | | | |

DEVELOPMENT APPLICATION

Drawing Title
BLOCK C - EXTERNAL FINISHES
SCHEDULE SHEET 1

Project
Canterbury South Public School
at
20 High St, Canterbury NSW 2193
for
Department of Education

Architect
NBRSPARTNERSARCHITECTURE.
Sydney
61 2 9922 2344
nbrsarchitecture.com
Any form of replication of this drawing in full or in part without the written permission of NBRSPARTNERS Pty Ltd constitutes an infringement of the copyright.
Nominated Architects: Geoffrey Deane 3786; Andrew Duffin 5602; Garry Hoddinett 5286
ABN 16 002 247 565

Date
Scale 100@A1 or 200@A3
Drawing Reference 17343-NBRS-A-DA9-C18
Revision

EAVES LINING - TIMBER LOOK
ALUMINIUM LINING

CLG 105
AMERICAN PINE



OFF FORM CONCRETE

CON 107
PATCHED & PAINTED



METAL BALUSTRADE

PREFINISHED METAL ROOFING

RFS 101
COLORBOND WINDSPRAY



PREFINISHED CFC WALL CLADDING

CLD 101
BARESTONE



JALOUSIE LOUVRE
LVR 201
GLAZED LOUVRES



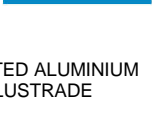
WINDOW / DOOR FRAME
ANODIZED ALUMINIUM
SATIN BLACK



PREFINISHED CFC WALL CLADDING

CLD 106
DULUX TRUE BLUE D

CLD 105
DULUX WATER RACEWAY D



BLOCK C - WEST ELEVATION

1 : 100

ALUMINIUM BATTEN SUN SCREEN

PREFINISHED METAL ROOFING

RFS 101
COLORBOND WINDSPRAY



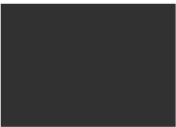
CFC WALL CLADDING

CLD 101
BARESTONE



WINDOW / DOOR FRAME

ANODIZED ALUMINIUM -
SATIN BLACK



PERFORATED ALUMINIUM
METAL BALUSTRADE

BAL 101



EAVES LINING - PRINTED
ALUMINIUM LINING

CLG 105
AMERICAN PINE



OFF FORM CONCRETE

CON 107
PATCHED & PAINTED



BLOCK C - NORTH ELEVATION

1 : 100

ALUMINIUM
BATTEN SUN SCREEN
SCN 112

OFF FORM CONCRETE

| Issue | No. | Date | Description | Chkd |
|-------|-----|------|-------------|------|
| | | | | |

DEVELOPMENT
APPLICATION

Drawing Title
BLOCK C - EXTERNAL FINISHES
SCHEDULE SHEET 2

Project
Canterbury South Public School
at
20 High St, Canterbury NSW 2193
for
Department of Education

Architect
NBRSARCHITECTURE.
Sydney
61 2 9922 2344
nbrsarchitecture.com
Any form of replication of this drawing in full or in part, without the written permission of NBRS+PARTNERS Pty Ltd constitutes an infringement of the copyright.
Nominated Architects: Geoffrey Deane 3786; Andrew Duffin 5602; Garry Hoddinett 5286
ABN 16 002 247 565

Date
Scale 100@A1 or 200@A3
Drawing Reference
17343-NBRS-A-DA9-C19
Revision



RWS201

RFS101
CAN104

RFS103
RWS202

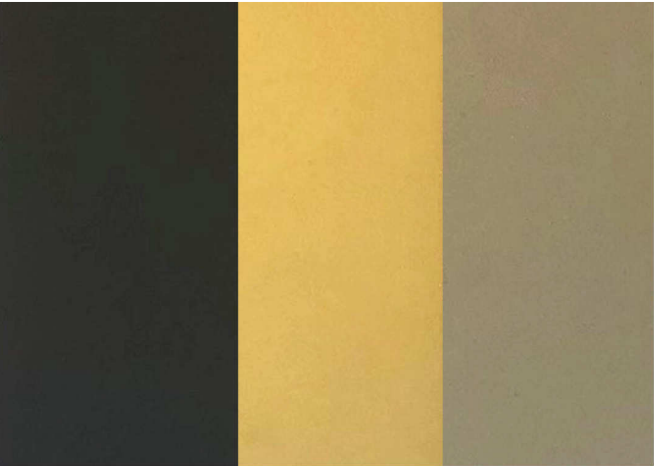


CLD101

CLG105



BAL101



WIN101
CLD203
BAL108

CLD109
CAN105
BAL105

CLD205

SCN112



BRK101

BRK102

BRK103

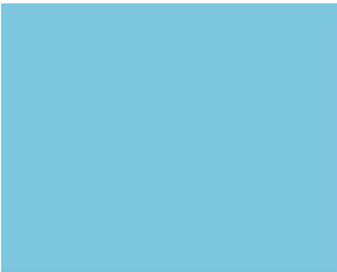


CLD108



CLD106
CLD108

CLD107
CAN108



CLD105

CAN107



GLS101



CON107

- BAL101** BALUSTRADE PERFORATED METAL
- BAL104** BALUSTRADE GLAZED CLEAR
- BAL105** BALUSTRADE SOLID CLADDING BLACK
- BAL108** BALUSTRADE ALUMINIUM BATTENS ANODISED BLACK
- BRK101** FACE BRICKWORK FINISH METALLIC PEWTER
- BRK102** FACE BRICKWORK FINISH GLAZED SEA SALT
- BRK103** FACE BRICKWORK FINISH GLAZED LAGOON
- CAN104** ALUMINIUM AWNING COLOUR TO MATCH ROOF SHEETING
- CAN106** CANOPY ALUMINIUM POWDERCOAT BLACK
- CAN107** CANOPY ALUMINIUM POWDERCOAT BLUE DULUX WHIMSY
- CAN108** CANOPY ALUMINIUM POWDERCOAT BLUE DULUX BLUE SURF
- CLD101** CFC CLADDING NATURAL GREY
- CLD105** CFC CLADDING PREFINISHED BLUE DULUX WHIMSY
- CLD106** CFC CLADDING PREFINISHED BLUE DULUX BLUE SURF
- CLD107** CFC CLADDING PREFINISHED BLUE DULUX BLUE SURF
- CLD108** CFC CLADDING PREFINISHED BLUE DULUX BLUE MITCHELL
- CLD109** CFC CLADDING PREFINISHED BLACK DULUX BLACK
- CLD203** COVER PLATE ANODISED ALUMINIUM SATIN BLACK
- CLD205** FEATURE ANGLE ANODISED ALUMINIUM ORIENTAL GOLD
- CLG105** ALUMINIUM CLADDING NON-CONBUSTIBLE FINISH AMERICAN PINE
- CON107** OFF FORM CONCRETE PATCHES AND PAINTED
- GLS100** GLASS LOW E CLEAR & NEUTRAL
- RFS101** PREFINISH METAL ROOF SHEETING
- RFS103** PREFINISH METAL ROOF SHEETING SHALE GREY
- RWS201** DOWNPIPE METAL NIGHT SKY
- RWS202** DOWNPIPES METAL SHALE GREY
- SCN109** SCREEN ANODISED ALUMINIUM SATIN BLACK
- SCN112** SCREEN ANODISED ALUMINIUM SATIN BLACK
- WIN101** WINDOW FRAME ANODISED ALUMINIUM SATIN BLACK

| Issue No. | Date | Description | Chkd |
|-----------|------|-------------|------|
| | | | |

DEVELOPMENT
APPLICATION

Drawing Title
SAMPLE BOARD

Project
Canterbury South Public School

at
20 High St, Canterbury NSW 2193

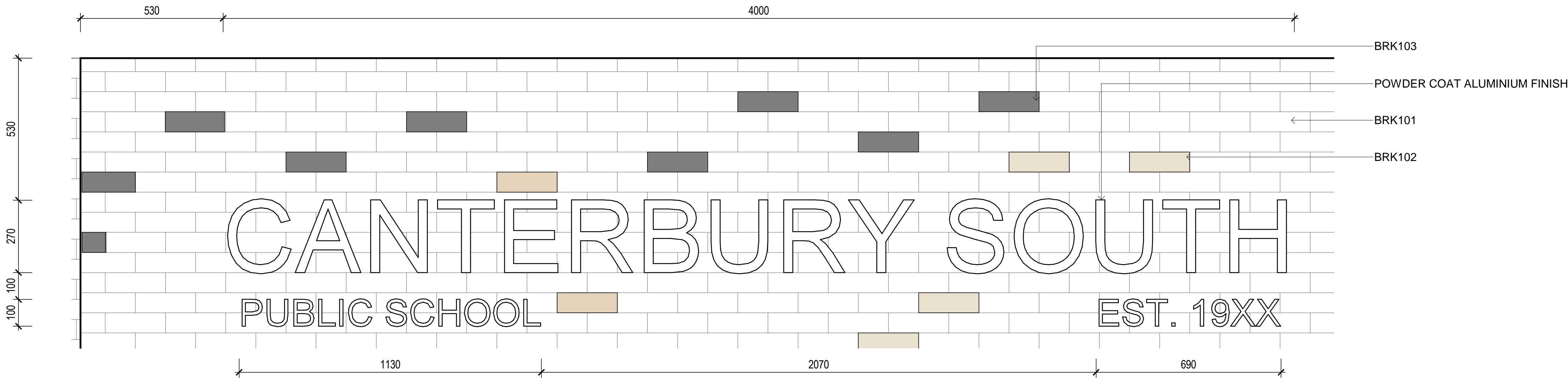
for
Department of Education

Architect
NBRSARCHITECTURE.
Sydney
61 2 9922 2344
nbrsarchitecture.com
Any form of replication of this drawing in full or in part without the written permission of NBRS+PARTNERS Pty Ltd constitutes an infringement of the copyright.
Nominated Architects: Geoffrey Deane 3786; Andrew Duffin 5602; Garry Hodnett 5286
ABN 16 002 247 565

Date
Scale 100@A1 or 200@A3

Drawing Reference
17343-NBRS-A-DA9-C20

Revision



HIGH STREET SIGNAGE ELEVATION
1 : 10

| Issue | | Description | Chkd |
|-------|------|-------------|------|
| No. | Date | | |
| | | | |

DEVELOPMENT
APPLICATION

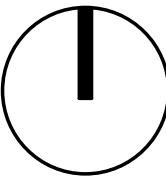
Drawing Title
SIGNAGE PLAN

Project
Canterbury South Public School

at
20 High St, Canterbury NSW 2193

for
Department of Education

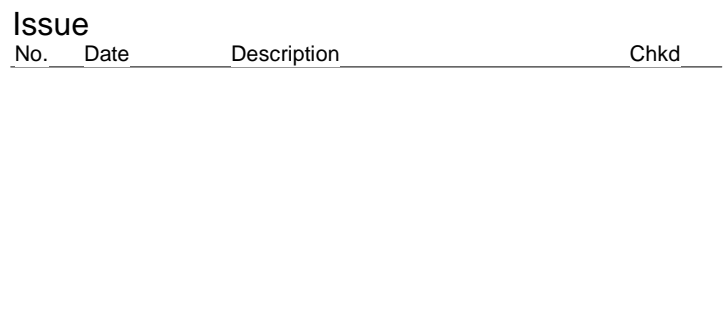
Architect
NBRSPARTNERSARCHITECTURE.
Sydney
61 2 9922 2344
Any form of replication of this drawing in full or in part without the written permission of NBRSPARTNERS Pty Ltd constitutes an infringement of the copyright.
Nominated Architects: Geoffrey Deane 3766; Andrew Duffin 5602; Garry Hoddinett 5286
ABN 16 002 247 565
nbsarchitecture.com



Date
Scale 100@A1 or 200@A3

Drawing Reference
17343-NBRS-A-DA9-C21

Revision




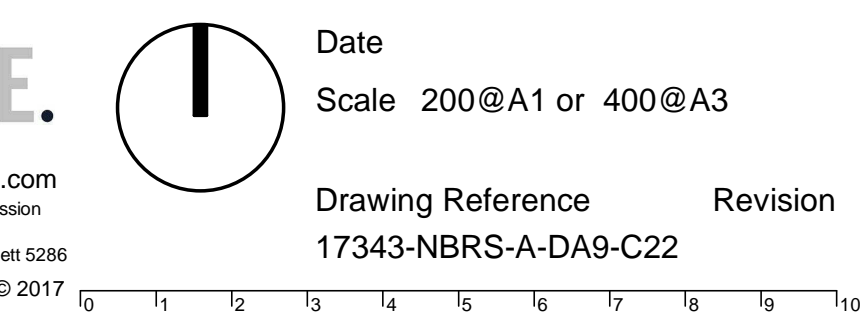
DEVELOPMENT APPLICATION

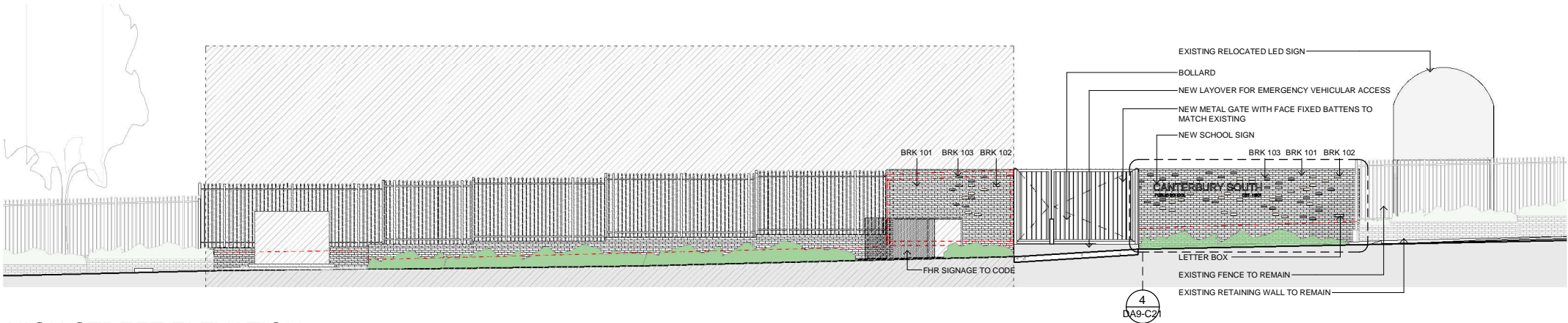
Drawing Title
WASTE AREA PLAN AND NEW
PARKING PLAN

Project
Canterbury South Public School
at
20 High St, Canterbury NSW 2193
for
Department of Education

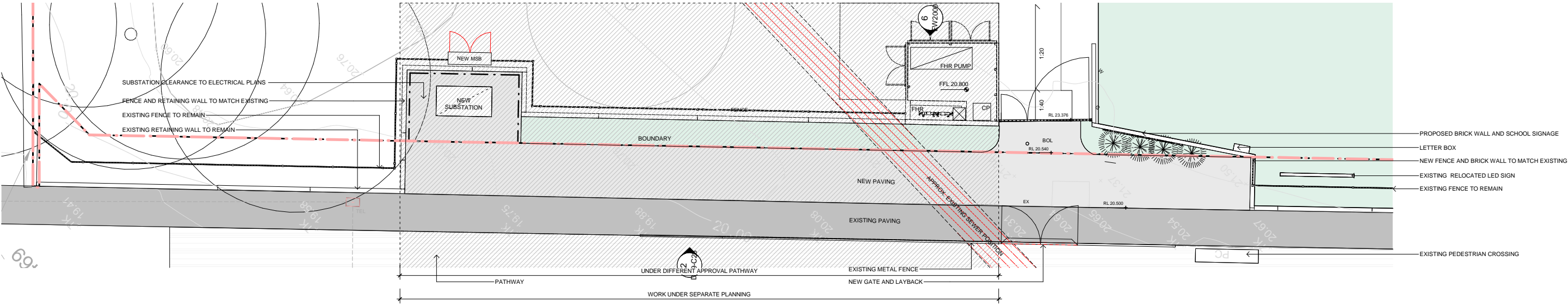
Architect
NBRSARCHITECTURE.
Sydney
61 2 9922 2344
nbrsarchitecture.com
Any form of replication of this drawing in full or in part without the written permission of NBRS Architects Pty Ltd constitutes an infringement of the copyright.
Nominated Architects: Geoffrey Deane 3766; Andrew Duffin 5602; Garry Hoddnett 5286
ABN 16 002 247 565 © 2017

 Date _____
Scale 200@A1 or 400@A3 _____
Drawing Reference _____ Revision _____
17343-NBRS-A-DA9-C22





HIGH STREET ELEVATION
1 : 100



HIGH STREET ENTRY PLAN
1 : 100

| Issue | | | |
|-------|------|-------------|------|
| No. | Date | Description | Chkd |
| | | | |

DEVELOPMENT
APPLICATION

Drawing Title
HIGH STREET ELEVATION AND
SIGNAGE

Project
Canterbury South Public School
at
20 High St, Canterbury NSW 2193
for
Department of Education

Architect
NBRSARCHITECTURE.
Sydney
61 2 9922 2344
nbrsarchitecture.com
Any form of replication of this drawing in full or in part without the written permission of NBRS+PARTNERS Pty Ltd constitutes an infringement of the copyright.
Nominated Architects: Geoffrey Deane 3786; Andrew Duffin 5602; Garry Hoddinett 5286
ABN 16 002 247 565

Date
Scale 100@A1 or 200@A3
Drawing Reference
17343-NBRS-A-DA9-C23
Revision